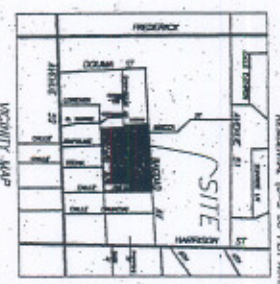
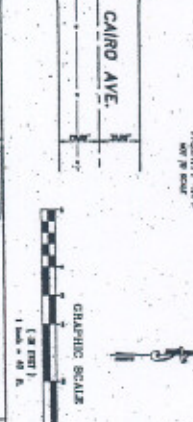
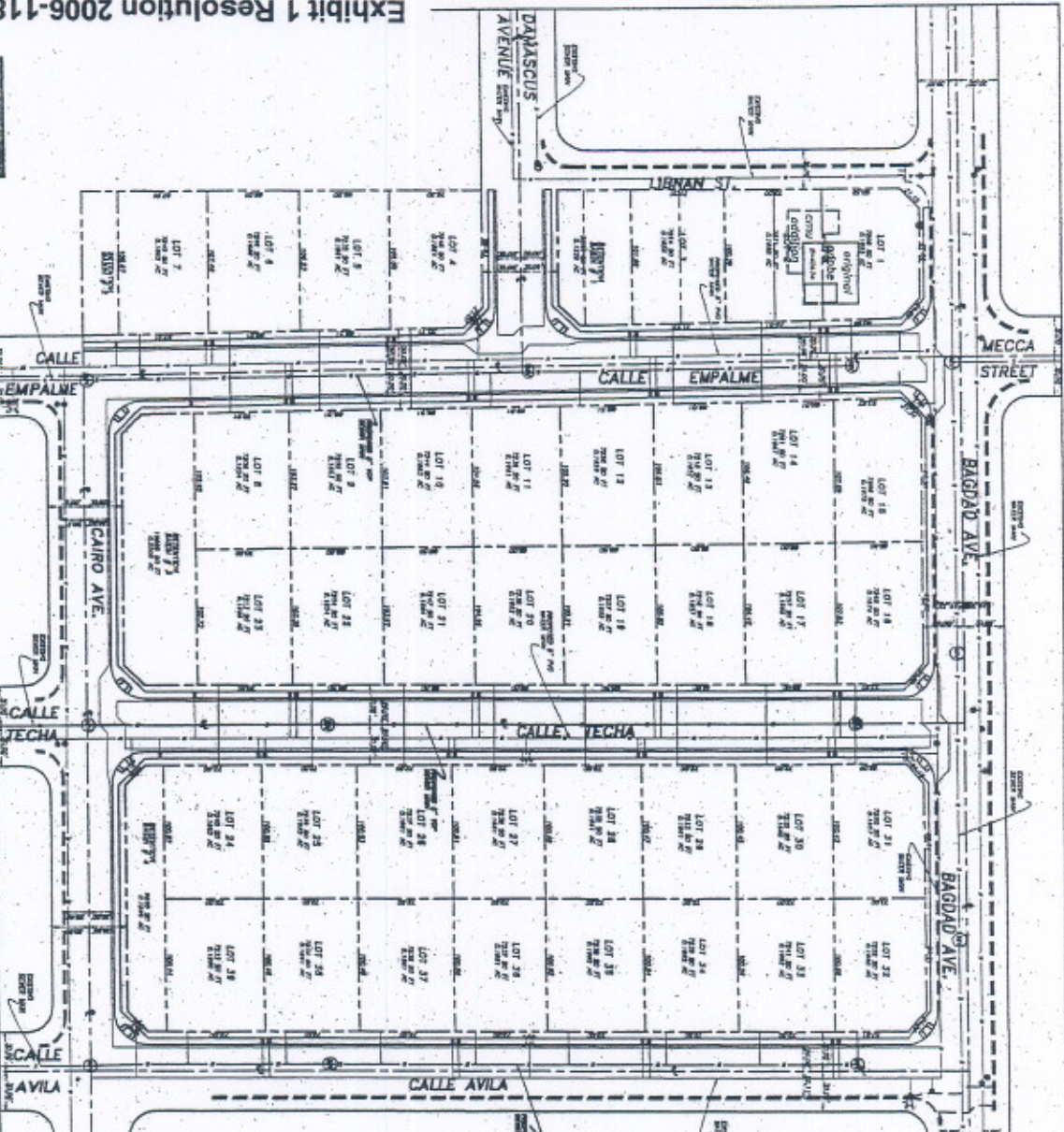


round Service Area
Call: TOLL FREE
1-800-237-3000

REVISIONS:
APPROVED BY:
DATE:

BIRRO CONSULTING INC.
Civil Engineering
Land Surveying
1000 N. 10th Street, Suite 100
Tucson, AZ 85710
Phone: (520) 797-0011
Fax: (520) 797-0012
www.birroconsulting.com

In The City of Coahuila
Tentative Tract Map
APN 765-091-001
84800 BAGDAD AVE
COPOLLET



GENERAL PLAN DESIGNATION: R-100 RESIDENTIAL
APN: 765-091-001
ACRES: 10.9 AC. GROSS & 7.8 AC. NET
SERVICES PROVIDED:
WATER: CITY OF COAHUILA
SEWER: CITY OF COAHUILA
GAS: SO. CO. GAS (P. AUTHORIZED)
CABLE TV: WISDOM (P. AUTHORIZED)
SCHOOL BUSES: COAHUILA PUBLIC SCHOOLS
SCHOOLS: COAHUILA PUBLIC SCHOOLS

OWNER/ARCHITECT/ENGINEER:
C/O COAHUILA CONSTRUCTION
LA. BOULEVARD #2233
(760) 564-4011
(760) 564-4012 FAX

PREPARED BY:
TRINO ENGINEERING, INC.
P.O. BOX 12800
PUEBLO BLVD., CA 92316
(760) 548-8018
(760) 548-8049 FAX

LEGAL DESCRIPTION:
THE SOUTHWEST 1/4 OF THE SOUTHWEST 1/4 OF THE SECTION 17, T14N, R12E, S12E, EXCEPTING THEREOUT THE NE 1/4 OF SAID SECTION 17, T14N, R12E, S12E, AS SET FORTH IN MEMORANDUM RECORDED AGAINST PUBLIC BOOK 2504, PAGE 102, D.D.E.

IN THE CITY OF COAHUILA COUNTY OF MEXICO STATE OF COAHUILA
TENTATIVE TRACT MAP NO. 33811
BEING A PORTION OF THE E 1/4 OF SECTION 16, TOWNSHIP 6 SOUTH, RANGE 12 EAST, SAN BERNARDINO MERIDIAN
ENGINEERING, INC.
JUNE 2005

- LEGEND & ABBREVIATIONS:
- 1. CONCRETE
 - 2. CONCRETE ON GRADE
 - 3. CONCRETE ON GRADE WITH CURB
 - 4. CONCRETE ON GRADE WITH CURB AND GUTTER
 - 5. ASPHALT
 - 6. ASPHALT WITH CURB
 - 7. ASPHALT WITH CURB AND GUTTER
 - 8. ASPHALT WITH CURB AND GUTTER WITH SIDEWALK
 - 9. ASPHALT WITH CURB AND GUTTER WITH SIDEWALK AND BIKEWAY
 - 10. ASPHALT WITH CURB AND GUTTER WITH SIDEWALK AND BIKEWAY AND BICYCLE LANE
 - 11. ASPHALT WITH CURB AND GUTTER WITH SIDEWALK AND BIKEWAY AND BICYCLE LANE AND TRAIL
 - 12. ASPHALT WITH CURB AND GUTTER WITH SIDEWALK AND BIKEWAY AND BICYCLE LANE AND TRAIL AND BIKEWAY
 - 13. ASPHALT WITH CURB AND GUTTER WITH SIDEWALK AND BIKEWAY AND BICYCLE LANE AND TRAIL AND BIKEWAY AND BIKEWAY
 - 14. ASPHALT WITH CURB AND GUTTER WITH SIDEWALK AND BIKEWAY AND BICYCLE LANE AND TRAIL AND BIKEWAY AND BIKEWAY AND BIKEWAY
 - 15. ASPHALT WITH CURB AND GUTTER WITH SIDEWALK AND BIKEWAY AND BICYCLE LANE AND TRAIL AND BIKEWAY AND BIKEWAY AND BIKEWAY AND BIKEWAY
 - 16. ASPHALT WITH CURB AND GUTTER WITH SIDEWALK AND BIKEWAY AND BICYCLE LANE AND TRAIL AND BIKEWAY AND BIKEWAY AND BIKEWAY AND BIKEWAY AND BIKEWAY
 - 17. ASPHALT WITH CURB AND GUTTER WITH SIDEWALK AND BIKEWAY AND BICYCLE LANE AND TRAIL AND BIKEWAY AND BIKEWAY AND BIKEWAY AND BIKEWAY AND BIKEWAY AND BIKEWAY
 - 18. ASPHALT WITH CURB AND GUTTER WITH SIDEWALK AND BIKEWAY AND BICYCLE LANE AND TRAIL AND BIKEWAY AND BIKEWAY AND BIKEWAY AND BIKEWAY AND BIKEWAY AND BIKEWAY AND BIKEWAY
 - 19. ASPHALT WITH CURB AND GUTTER WITH SIDEWALK AND BIKEWAY AND BICYCLE LANE AND TRAIL AND BIKEWAY AND BIKEWAY AND BIKEWAY AND BIKEWAY AND BIKEWAY AND BIKEWAY AND BIKEWAY AND BIKEWAY
 - 20. ASPHALT WITH CURB AND GUTTER WITH SIDEWALK AND BIKEWAY AND BICYCLE LANE AND TRAIL AND BIKEWAY AND BIKEWAY AND BIKEWAY AND BIKEWAY AND BIKEWAY AND BIKEWAY AND BIKEWAY AND BIKEWAY AND BIKEWAY
 - 21. ASPHALT WITH CURB AND GUTTER WITH SIDEWALK AND BIKEWAY AND BICYCLE LANE AND TRAIL AND BIKEWAY AND BIKEWAY AND BIKEWAY AND BIKEWAY AND BIKEWAY AND BIKEWAY AND BIKEWAY AND BIKEWAY AND BIKEWAY
 - 22. ASPHALT WITH CURB AND GUTTER WITH SIDEWALK AND BIKEWAY AND BICYCLE LANE AND TRAIL AND BIKEWAY AND BIKEWAY AND BIKEWAY AND BIKEWAY AND BIKEWAY AND BIKEWAY AND BIKEWAY AND BIKEWAY AND BIKEWAY
 - 23. ASPHALT WITH CURB AND GUTTER WITH SIDEWALK AND BIKEWAY AND BICYCLE LANE AND TRAIL AND BIKEWAY AND BIKEWAY AND BIKEWAY AND BIKEWAY AND BIKEWAY AND BIKEWAY AND BIKEWAY AND BIKEWAY AND BIKEWAY
 - 24. ASPHALT WITH CURB AND GUTTER WITH SIDEWALK AND BIKEWAY AND BICYCLE LANE AND TRAIL AND BIKEWAY AND BIKEWAY AND BIKEWAY AND BIKEWAY AND BIKEWAY AND BIKEWAY AND BIKEWAY AND BIKEWAY AND BIKEWAY
 - 25. ASPHALT WITH CURB AND GUTTER WITH SIDEWALK AND BIKEWAY AND BICYCLE LANE AND TRAIL AND BIKEWAY AND BIKEWAY AND BIKEWAY AND BIKEWAY AND BIKEWAY AND BIKEWAY AND BIKEWAY AND BIKEWAY AND BIKEWAY
 - 26. ASPHALT WITH CURB AND GUTTER WITH SIDEWALK AND BIKEWAY AND BICYCLE LANE AND TRAIL AND BIKEWAY AND BIKEWAY AND BIKEWAY AND BIKEWAY AND BIKEWAY AND BIKEWAY AND BIKEWAY AND BIKEWAY AND BIKEWAY
 - 27. ASPHALT WITH CURB AND GUTTER WITH SIDEWALK AND BIKEWAY AND BICYCLE LANE AND TRAIL AND BIKEWAY AND BIKEWAY AND BIKEWAY AND BIKEWAY AND BIKEWAY AND BIKEWAY AND BIKEWAY AND BIKEWAY AND BIKEWAY
 - 28. ASPHALT WITH CURB AND GUTTER WITH SIDEWALK AND BIKEWAY AND BICYCLE LANE AND TRAIL AND BIKEWAY AND BIKEWAY AND BIKEWAY AND BIKEWAY AND BIKEWAY AND BIKEWAY AND BIKEWAY AND BIKEWAY AND BIKEWAY
 - 29. ASPHALT WITH CURB AND GUTTER WITH SIDEWALK AND BIKEWAY AND BICYCLE LANE AND TRAIL AND BIKEWAY AND BIKEWAY AND BIKEWAY AND BIKEWAY AND BIKEWAY AND BIKEWAY AND BIKEWAY AND BIKEWAY AND BIKEWAY
 - 30. ASPHALT WITH CURB AND GUTTER WITH SIDEWALK AND BIKEWAY AND BICYCLE LANE AND TRAIL AND BIKEWAY AND BIKEWAY AND BIKEWAY AND BIKEWAY AND BIKEWAY AND BIKEWAY AND BIKEWAY AND BIKEWAY AND BIKEWAY
 - 31. ASPHALT WITH CURB AND GUTTER WITH SIDEWALK AND BIKEWAY AND BICYCLE LANE AND TRAIL AND BIKEWAY AND BIKEWAY AND BIKEWAY AND BIKEWAY AND BIKEWAY AND BIKEWAY AND BIKEWAY AND BIKEWAY AND BIKEWAY
 - 32. ASPHALT WITH CURB AND GUTTER WITH SIDEWALK AND BIKEWAY AND BICYCLE LANE AND TRAIL AND BIKEWAY AND BIKEWAY AND BIKEWAY AND BIKEWAY AND BIKEWAY AND BIKEWAY AND BIKEWAY AND BIKEWAY AND BIKEWAY
 - 33. ASPHALT WITH CURB AND GUTTER WITH SIDEWALK AND BIKEWAY AND BICYCLE LANE AND TRAIL AND BIKEWAY AND BIKEWAY AND BIKEWAY AND BIKEWAY AND BIKEWAY AND BIKEWAY AND BIKEWAY AND BIKEWAY AND BIKEWAY
 - 34. ASPHALT WITH CURB AND GUTTER WITH SIDEWALK AND BIKEWAY AND BICYCLE LANE AND TRAIL AND BIKEWAY AND BIKEWAY AND BIKEWAY AND BIKEWAY AND BIKEWAY AND BIKEWAY AND BIKEWAY AND BIKEWAY AND BIKEWAY
 - 35. ASPHALT WITH CURB AND GUTTER WITH SIDEWALK AND BIKEWAY AND BICYCLE LANE AND TRAIL AND BIKEWAY AND BIKEWAY AND BIKEWAY AND BIKEWAY AND BIKEWAY AND BIKEWAY AND BIKEWAY AND BIKEWAY AND BIKEWAY
 - 36. ASPHALT WITH CURB AND GUTTER WITH SIDEWALK AND BIKEWAY AND BICYCLE LANE AND TRAIL AND BIKEWAY AND BIKEWAY AND BIKEWAY AND BIKEWAY AND BIKEWAY AND BIKEWAY AND BIKEWAY AND BIKEWAY AND BIKEWAY
 - 37. ASPHALT WITH CURB AND GUTTER WITH SIDEWALK AND BIKEWAY AND BICYCLE LANE AND TRAIL AND BIKEWAY AND BIKEWAY AND BIKEWAY AND BIKEWAY AND BIKEWAY AND BIKEWAY AND BIKEWAY AND BIKEWAY AND BIKEWAY
 - 38. ASPHALT WITH CURB AND GUTTER WITH SIDEWALK AND BIKEWAY AND BICYCLE LANE AND TRAIL AND BIKEWAY AND BIKEWAY AND BIKEWAY AND BIKEWAY AND BIKEWAY AND BIKEWAY AND BIKEWAY AND BIKEWAY AND BIKEWAY

units
38 units

CH 8/12/11