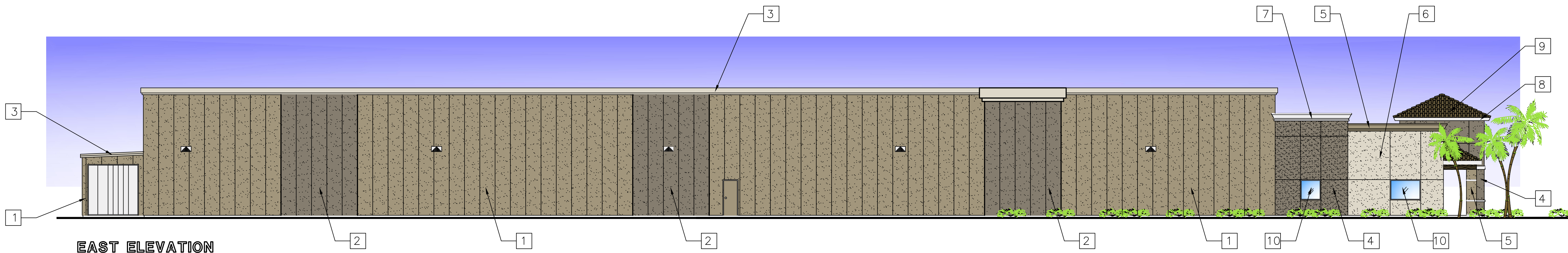
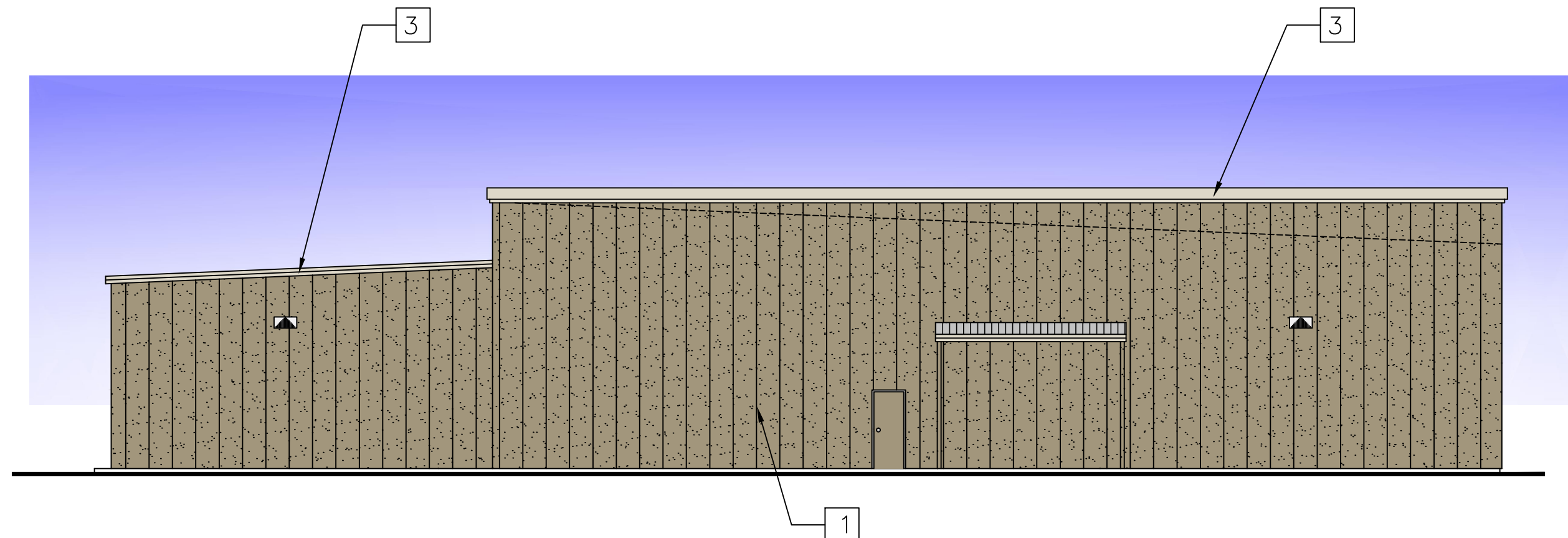


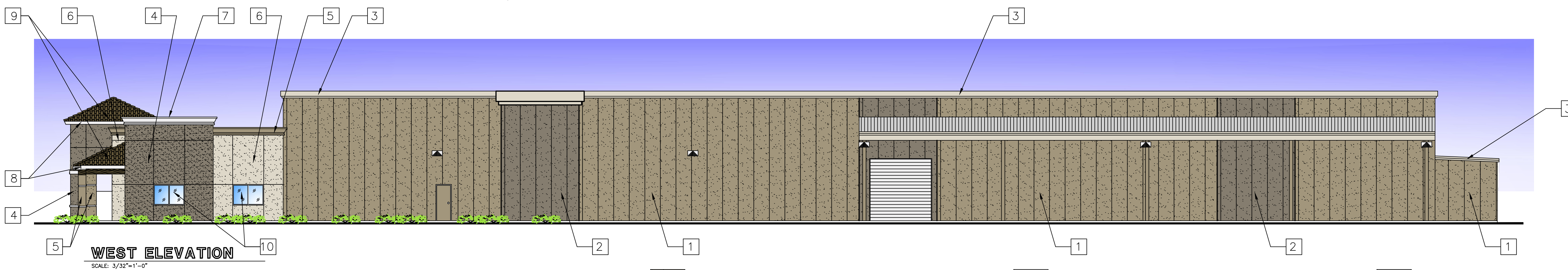
**NORTH ELEVATION**  
SCALE: 3/32"=1'-0"



**EAST ELEVATION**  
SCALE: 3/32"=1'-0"



**SOUTH ELEVATION**  
SCALE: 3/32"=1'-0"



**WEST ELEVATION**  
SCALE: 3/32"=1'-0"

**EXTERIOR FINISHES:**

- 1 MATERIAL: GRANITSTONE INSULATED METAL WALL PANEL  
BRAND: KINGSPAN  
COLOR: SURREY BEIGE
- 2 MATERIAL: GRANITSTONE INSULATED METAL WALL PANEL  
BRAND: KINGSPAN  
COLOR: TAPESTONE
- 3 MATERIAL: METAL TRIM  
TO MATCH LAHABRA  
DOVE GREY #40

- 4 MATERIAL: STUCCO FINISH  
LaHabra  
BELLE GLADE #81583
- 5 MATERIAL: STUCCO FINISH  
LaHabra  
FALLBROOK #434
- 6 MATERIAL: STUCCO FINISH  
LaHabra  
DOVE GREY #40

- 7 MATERIAL: STUCCO FINISH  
LaHabra  
CRYSTAL WHITE #50
- 8 MATERIAL: WOOD  
TO MATCH LaHabra  
CRYSTAL WHITE #50
- 9 MATERIAL: FLAT CONCRETE ROOF TILE  
MONIER LIFETILE  
APPALACHIAN BLEND

- 10 MATERIAL: ALUMINIUM STOREFRONT GLASS  
FRAME:  
CLEAR ANODIZED  
CLEAR GLASS

PROJECT: **DOUBLE DATE FACILITY**  
INDUSTRIAL WAY, COACHELLA, CA

SCALE: **AS SHOWN**  
DATE: **07/30/2014**

SHEET CONTENTS:  
**PROCESSING/COOLER  
EXTERIOR ELEVATIONS**

JOB No. **2013-116**  
DRAWING No. **5 / 8**

**DDI** **DUGGINS CONSTRUCTION**  
PARTNERS IN DEVELOPMENT  
341 WEST CROWN COURT, IMPERIAL, CA 92251  
PHONE: 760.355.5600 • FAX: 760.355.6756  
LIC. # 290934  
www.dugginsconstruction.com

**DISCLAIMER:**  
THE DESIGN DEPICTED HEREIN IS THE EXCLUSIVE PROPERTY OF DUGGINS CONSTRUCTION. IT IS TO BE USED IN CONNECTION WITH THIS PROJECT AND NOT BE REPRODUCED, COPIED, EXHIBITED, WITHOUT PRIOR WRITTEN CONSENT.  
COPYRIGHT, 2012  
DUGGINS CONSTRUCTION, INC.