

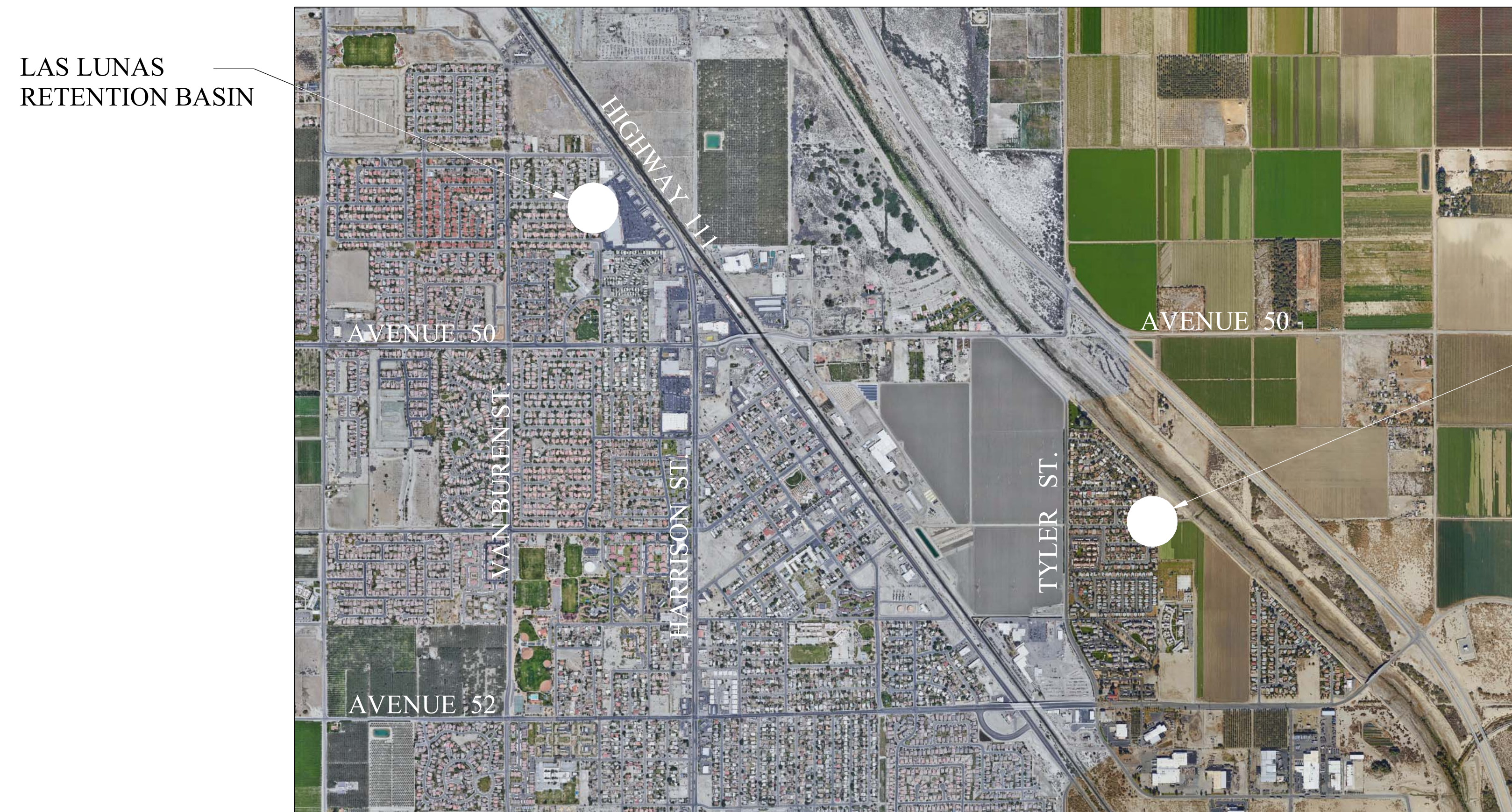
# City of Coachella



43955 Port Maria Road  
Bermuda Dunes, CA 92203  
760.276.8700  
www.projectlinks.net



## LAS LUNAS AVE. AND CALLE BOUGANVILIA RETENTION BASIN - LANDSCAPE IMPROVEMENTS



LAS LUNAS  
RETENTION BASIN

CALLE BOUGANVILIA  
RETENTION BASIN

SITE MAP

### SHEET INDEX

SHEET NO.	SHEET DESCRIPTION
L1.0	TITLE SHEET
L1.1	IRRIGATION LAYOUT PLAN
L2.1	IRRIGATION DETAILS
L3.0	PLANTING PLAN
L3.1	PLANTING DETAILS

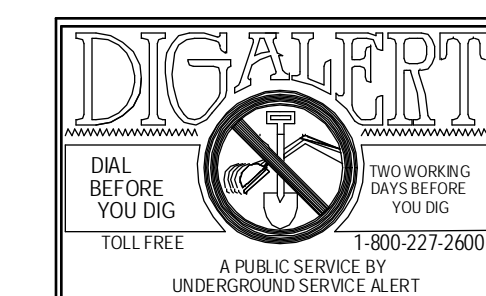
#### REVISIONS

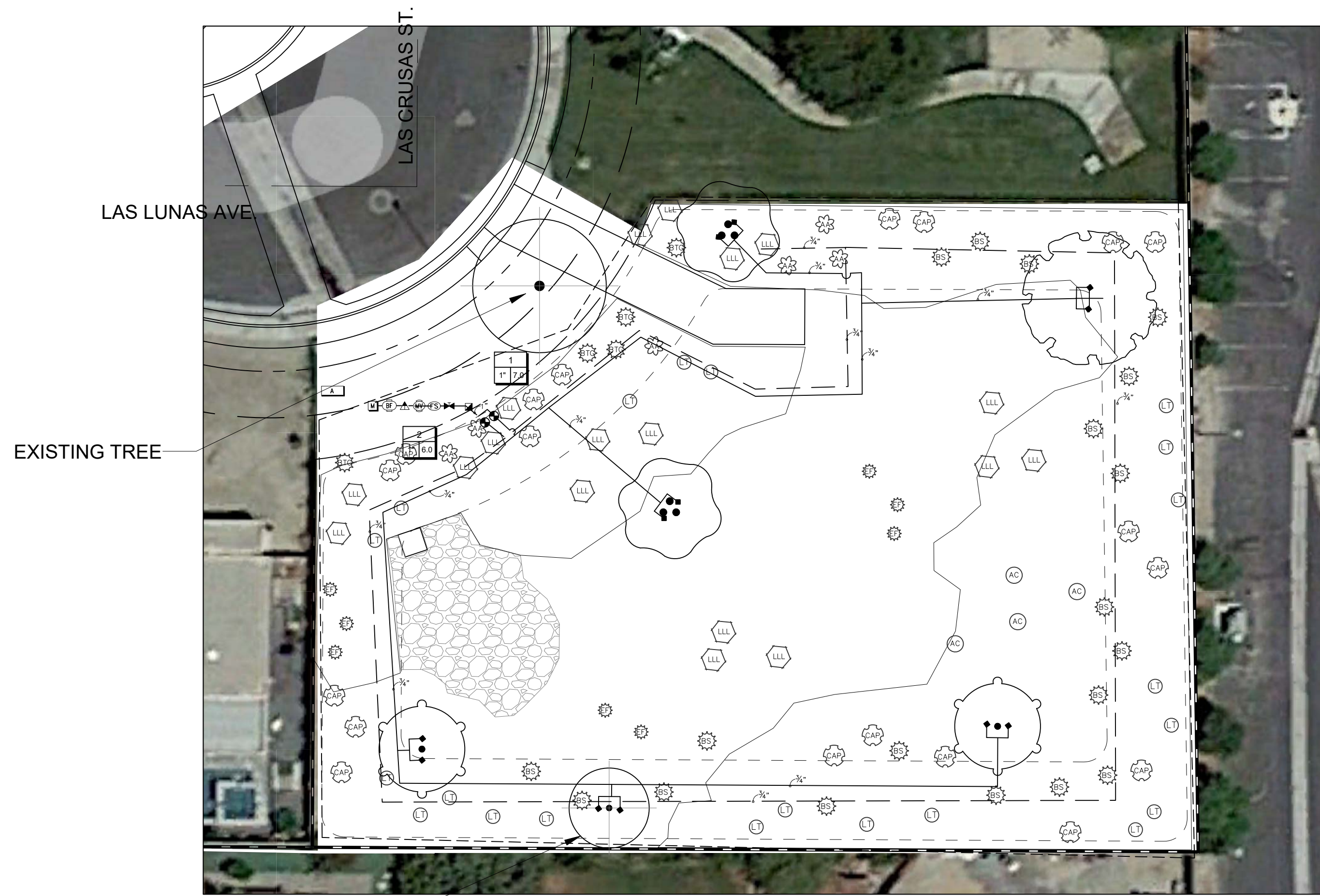
Date	Drawn	Checked	By	Description of Change
△				
△				
△				
△				
△				
△				

JOB #  
PL-DR

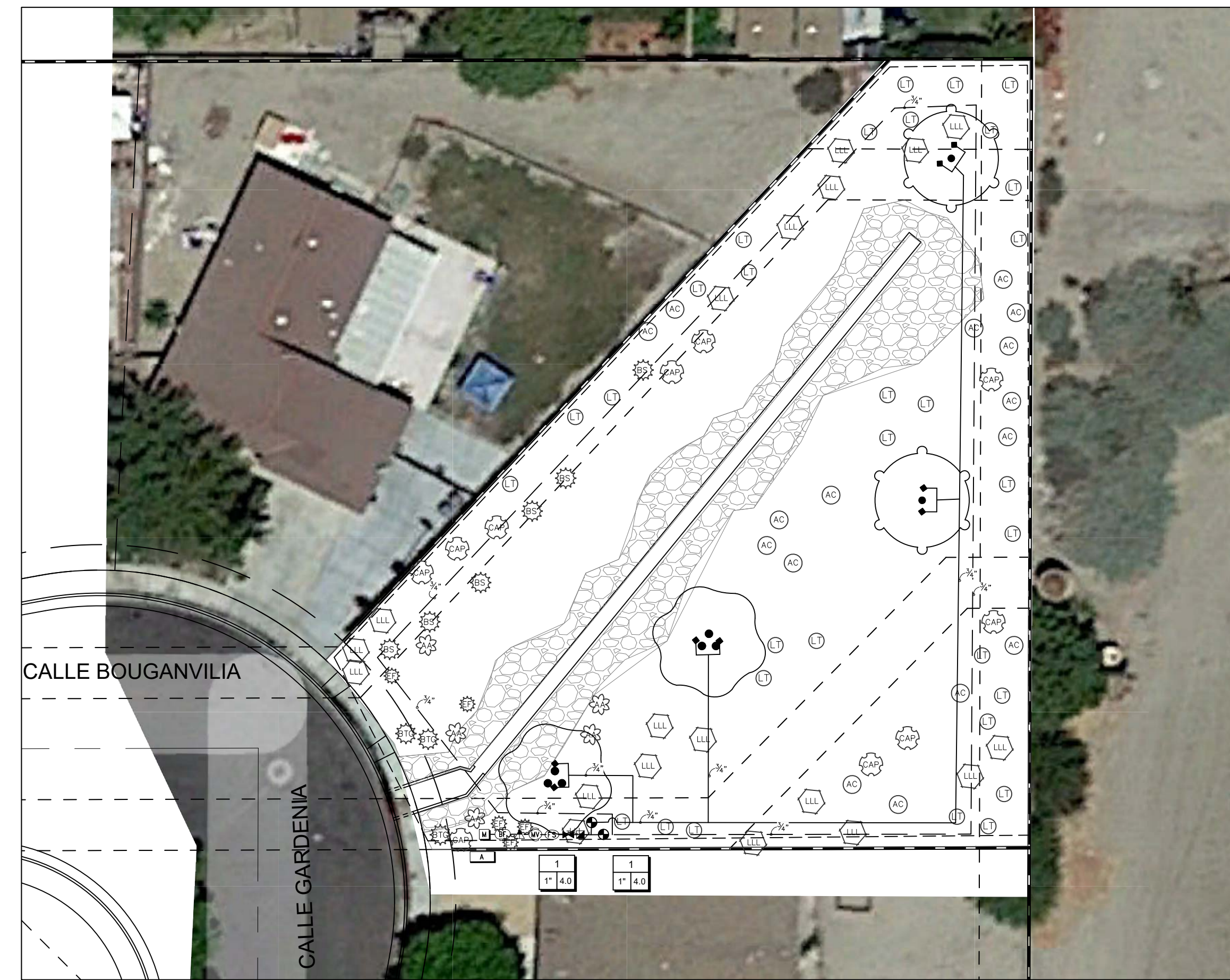
DATE:  
May 2, 2023

TITLE SHEET





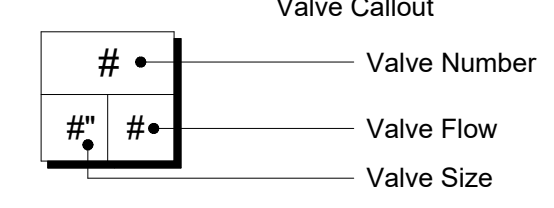
**LAS LUNAS RETENTION BASIN**



**BOUGANVILLEA RETENTION BASIN**

**IRRIGATION\_SCHEDULE**

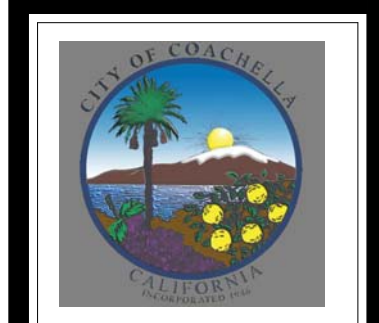
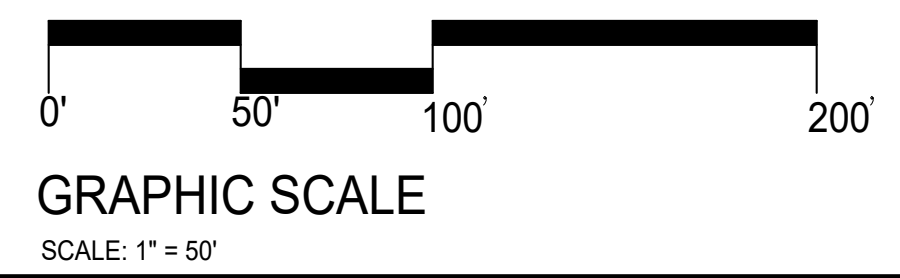
SYMBOL	MANUFACTURER/MODEL/DESCRIPTION	QTY
	Hunter XCH-600-SSP - 6 Stn controller, SS, with solar panel.	1
	Rain Bird 1806-SAM-5 Series Stream w/ PCS 5CST-020 Stream Bubbler 6.0" pop up with check valve, pressure compensating screen.	12
	Rain Bird XCZ-100-PRB-COM Medium Plus Flow Drip Control Kit for Commercial Applications. 1" Ball Valve with 1" PESB Valve and 1" Pressure Regulating 40psi Quick-Check Basket Filter. 3gpm to 20gpm.	2
	Area to Receive Drip Emitters Rain Bird XB-PC-1032 Single Outlet, Pressure Compensating Drip Emitters. Flow rates of 0.5gph=blue, 1.0gph=black, and 2.0gph=red. Comes with a 10-32 threaded inlet x barb outlet. Emitter Notes: 10PC1032 emitters (2 assigned to each 5 gal plant)	192
	Rain Bird 44LRC 1" Quick Coupler Valve, two piece body, locking cover	1
	Nibco T-113-K Class 125 bronze gate shut off valve with cross handle, same size as pipe diameter, Size Range - 1/4" - 3"	1
	Rain Bird PEB 2" Master Valve.	1
	Wilkinson Model 500 Pressure limited to 75.24 PSI Pressure Regulator Valve set to 80 PSI	1
	Febco 825Y 2" Reduced Pressure Backflow Preventer	1
	Rain Bird FS-200-B 2" Flow Sensor for use with Rain Bird Maxicom, SiteControl, and ESP-LXD Central Control Systems. Brass Model. Suggested Operating Range of 4.9 GPM to 294.0 GPM. Sensors should be sized for flow rather than pipe size.	1
	Water Meter 1" New Water meter to be installed per CVWD	1
	Irrigation Lateral Line: PVC Schedule 40	1,500 l.f.



**IRRIGATION\_SCHEDULE**

SYMBOL	MANUFACTURER/MODEL/DESCRIPTION	QTY
	Hunter XCH-600-SSP - 6 Stn controller, SS, with solar panel.	1
	Rain Bird 1806-SAM-5 Series Stream w/ PCS 5CST-020 Stream Bubbler 6.0" pop up with check valve, pressure compensating screen.	12
	Rain Bird XCZ-100-PRB-COM Medium Plus Flow Drip Control Kit for Commercial Applications. 1" Ball Valve with 1" PESB Valve and 1" Pressure Regulating 40psi Quick-Check Basket Filter. 3gpm to 20gpm.	2
	Area to Receive Drip Emitters Rain Bird XB-PC-1032 Single Outlet, Pressure Compensating Drip Emitters. Flow rates of 0.5gph=blue, 1.0gph=black, and 2.0gph=red. Comes with a 10-32 threaded inlet x barb outlet. Emitter Notes: 10PC1032 emitters (2 assigned to each 5 gal plant)	184
	Rain Bird 44LRC 1" Quick Coupler Valve, two piece body, locking cover	1
	Nibco T-113-K Class 125 bronze gate shut off valve with cross handle, same size as pipe diameter, Size Range - 1/4" - 3"	1
	Rain Bird PEB 2" Master Valve.	1
	Wilkinson Model 500 Pressure limited to 75.24 PSI Pressure Regulator Valve set to 80 PSI	1
	Febco 825Y 2" Reduced Pressure Backflow Preventer	1
	Rain Bird FS-200-B 2" Flow Sensor for use with Rain Bird Maxicom, SiteControl, and ESP-LXD Central Control Systems. Brass Model. Suggested Operating Range of 4.9 GPM to 294.0 GPM. Sensors should be sized for flow rather than pipe size.	1
	Water Meter 1" New Water meter to be installed per CVWD	1
	Irrigation Lateral Line: PVC Schedule 40	800 l.f.

**CITY OF COACHELLA**  
 APPROVED FOR CONSTRUCTION:  
 \_\_\_\_\_ DATE: \_\_\_\_\_  
 MARITZA MARTINEZ  
 PUBLIC WORKS DIRECTOR

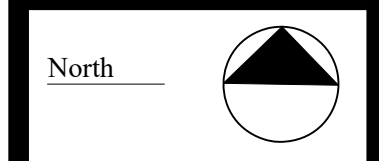


**City of Coachella**  
 53990 Enterprise Way  
 Coachella, CA 92236

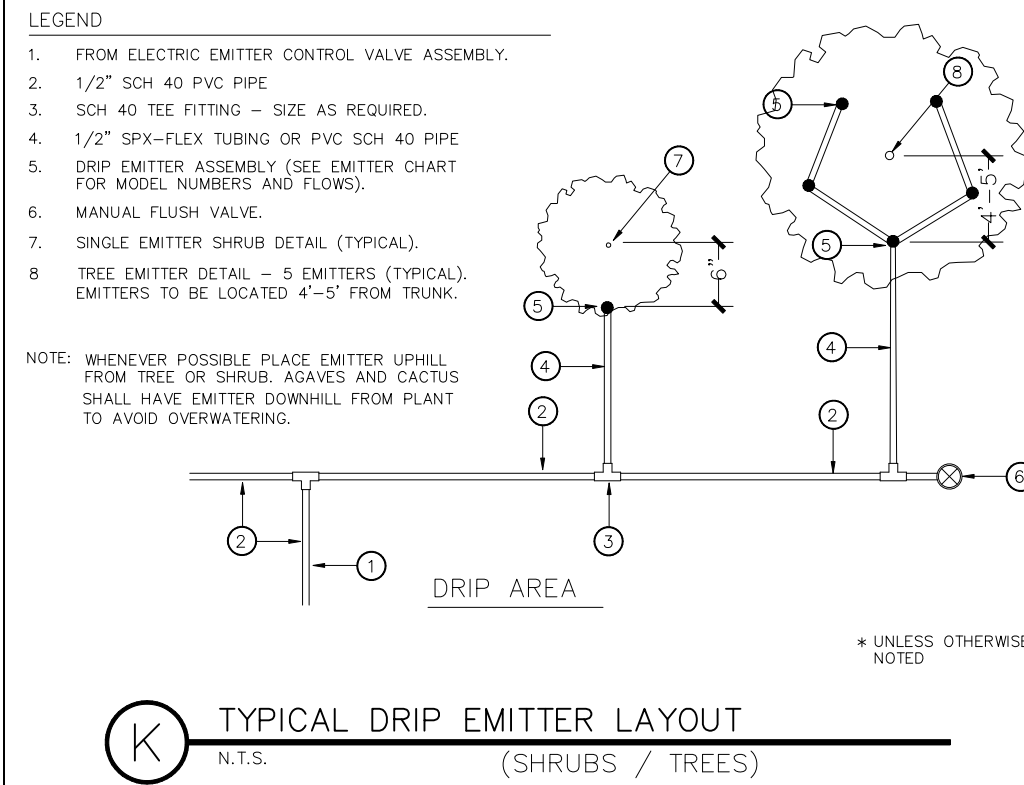
no.	revisions	date	by

Scale: 1" = 50'  
 Date: May 2, 2023  
 Drawn By: \_\_\_\_\_  
 Approved By: \_\_\_\_\_

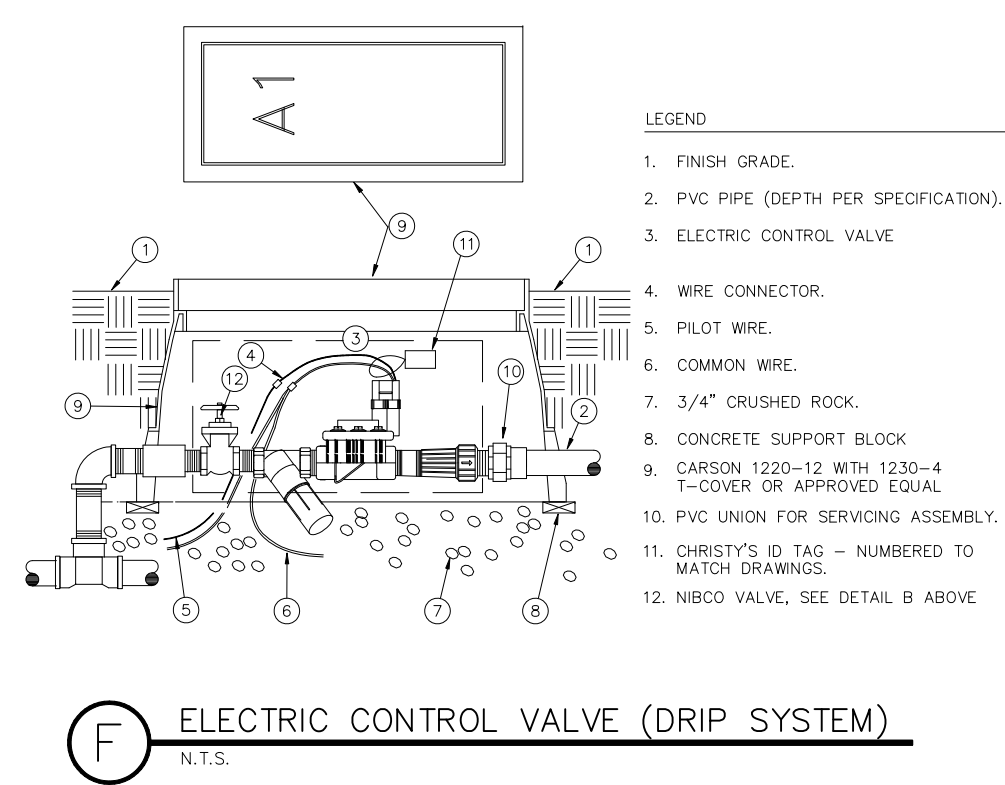
**Coachella Retention Basins**  
 Las Lunas - Bouganvillea Irrigation Plans



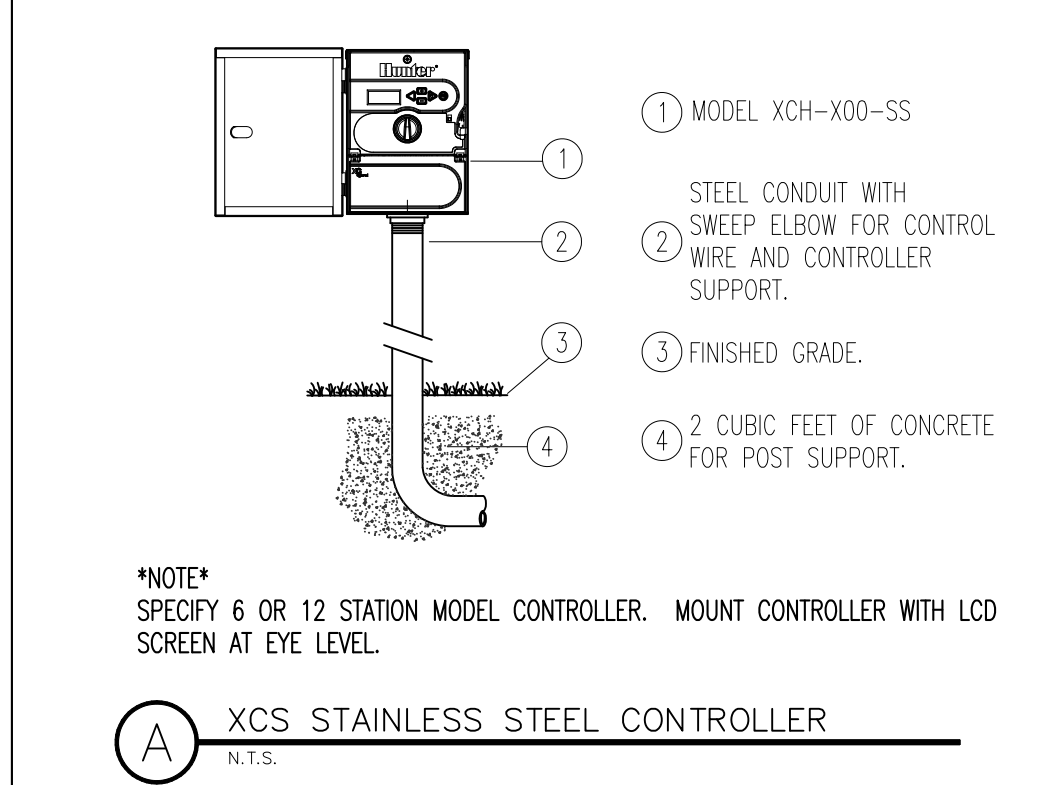
Job No. **PL-DR**  
 Sheet No. **L1.1**  
 of 8



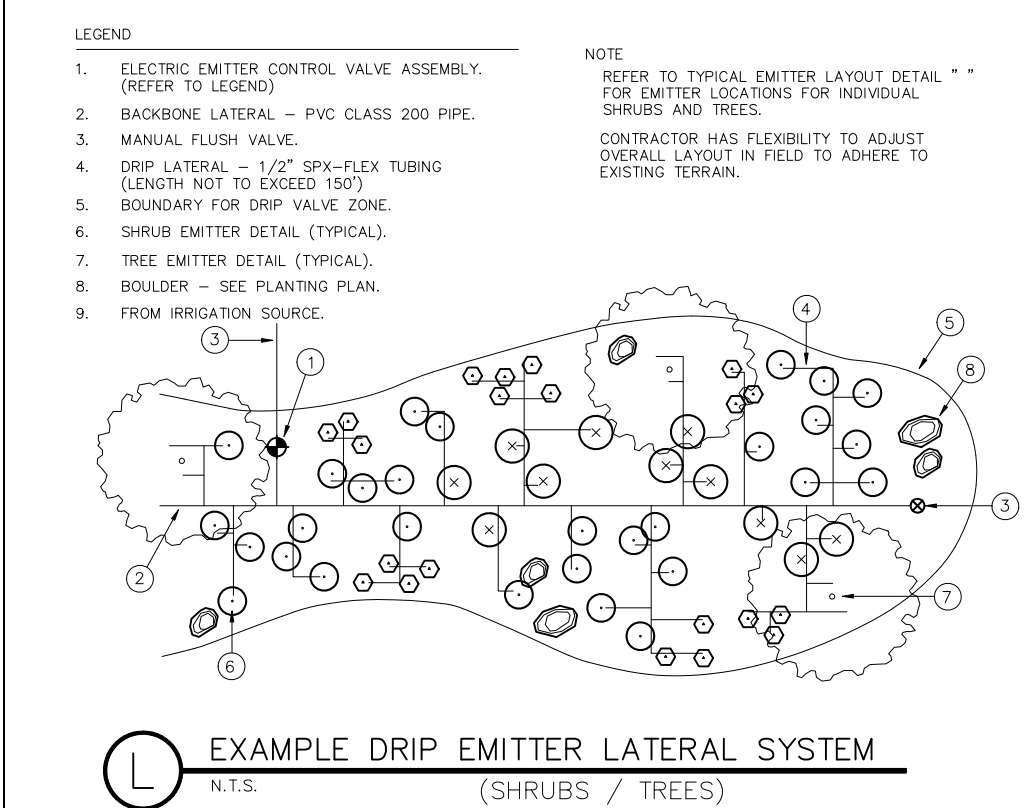
**K** TYPICAL DRIP EMITTER LAYOUT  
N.T.S. (SHRUBS / TREES)



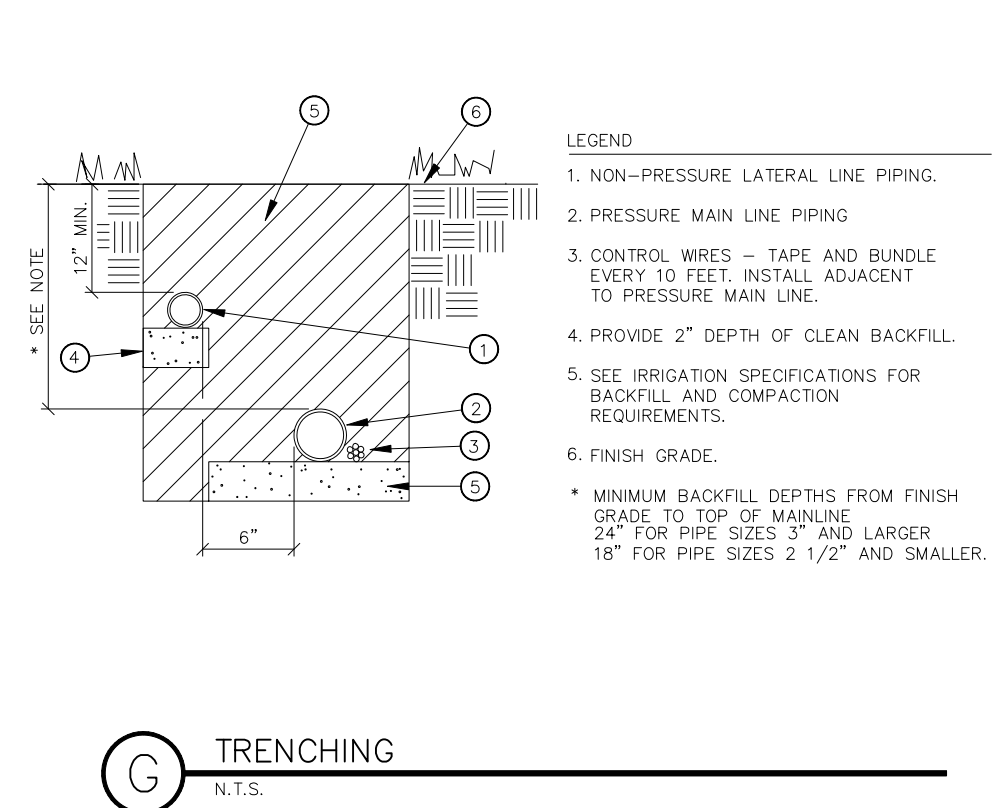
**F** ELECTRIC CONTROL VALVE (DRIP SYSTEM)  
N.T.S.



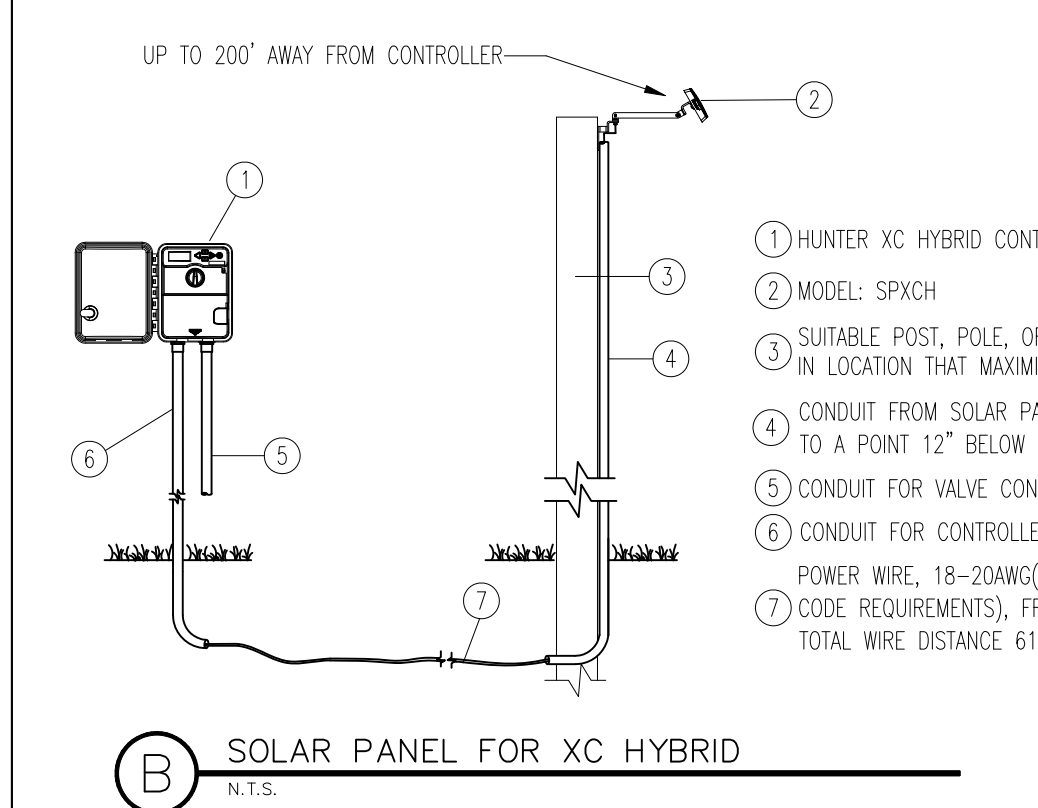
**A** XCS STAINLESS STEEL CONTROLLER  
N.T.S.



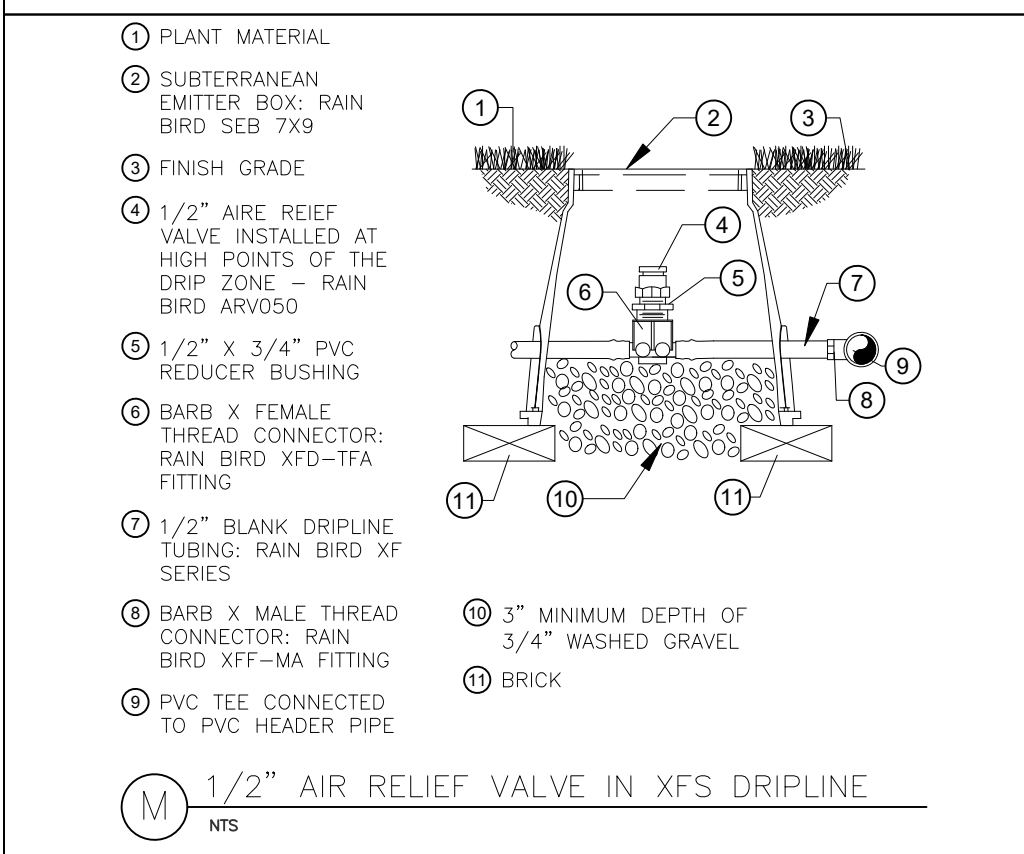
**L** EXAMPLE DRIP EMITTER LATERAL SYSTEM  
N.T.S. (SHRUBS / TREES)



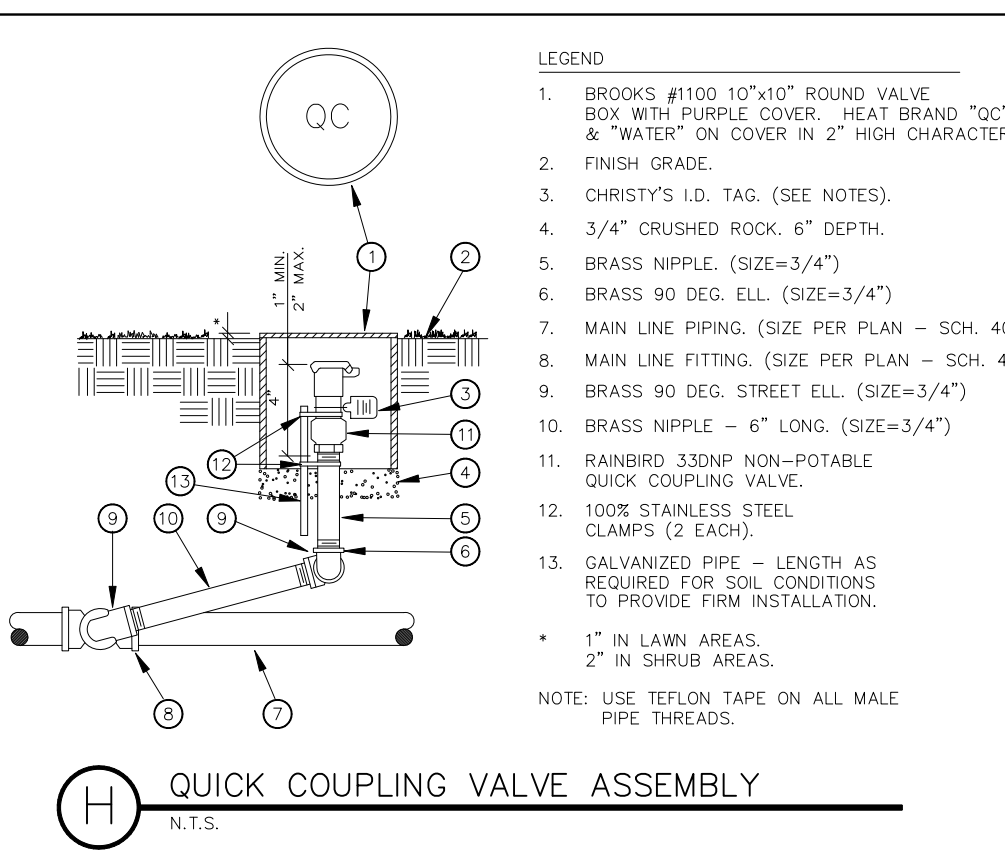
**G** TRENCHING  
N.T.S.



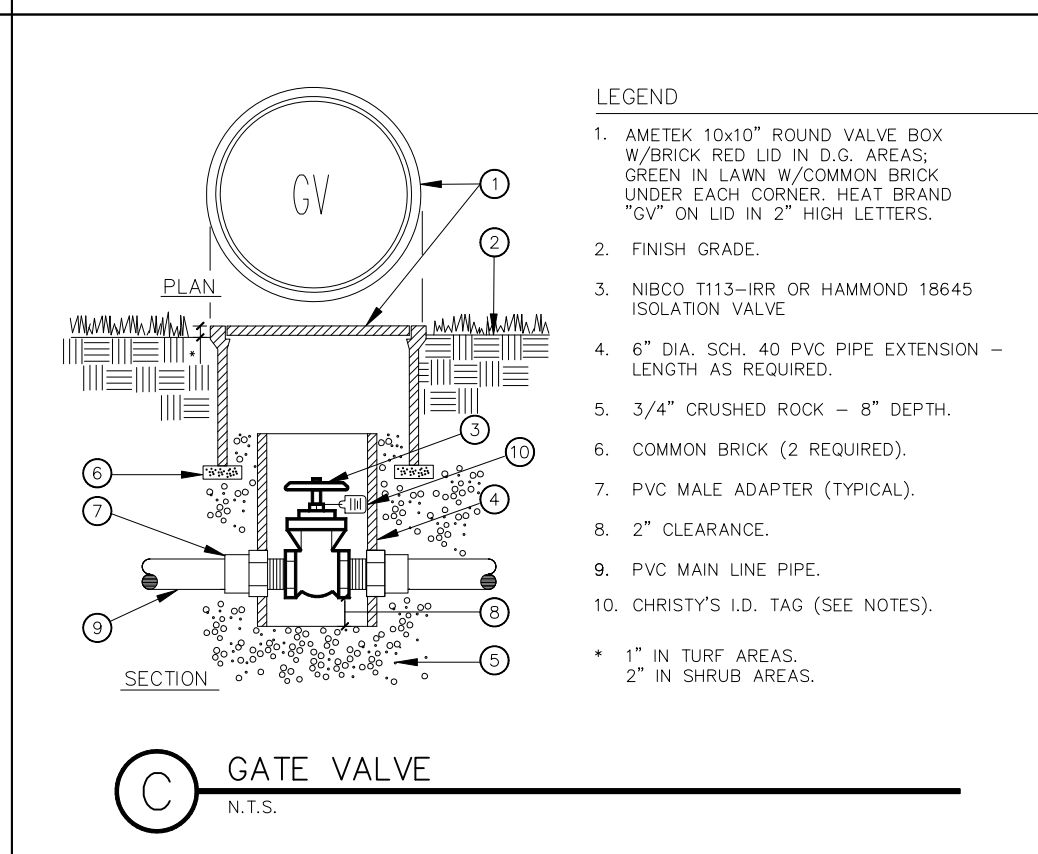
**B** SOLAR PANEL FOR XC HYBRID  
N.T.S.



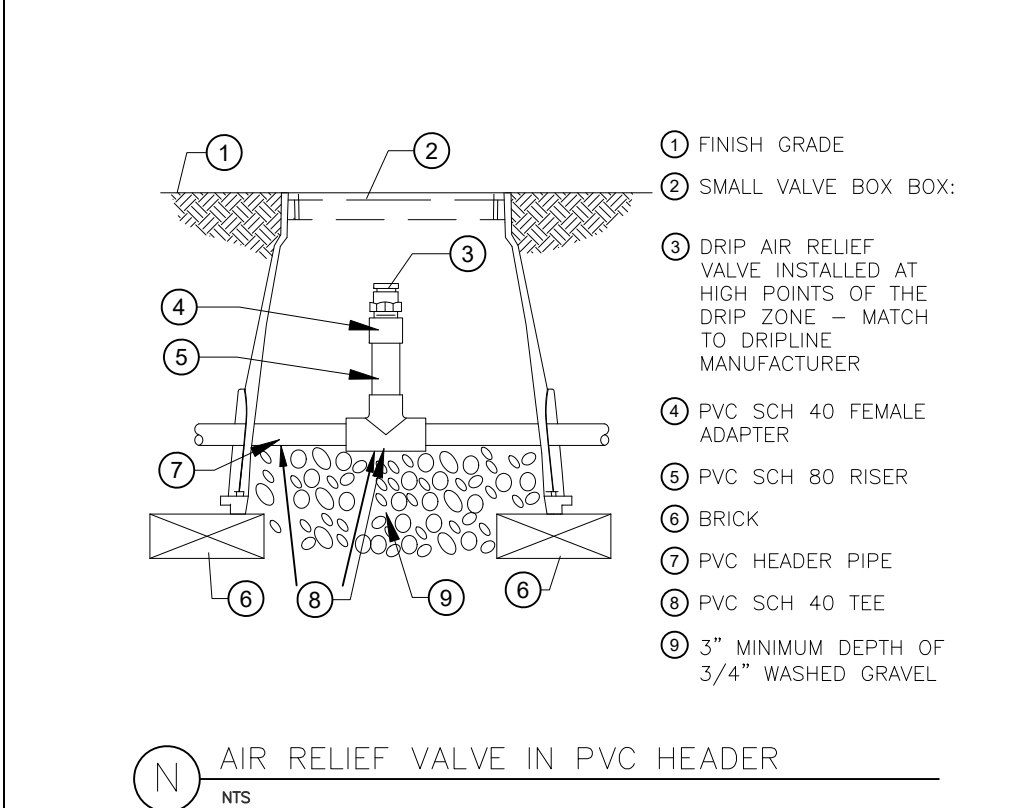
**M** 1/2" AIR RELIEF VALVE IN XFS DRIPLINE  
N.T.S.



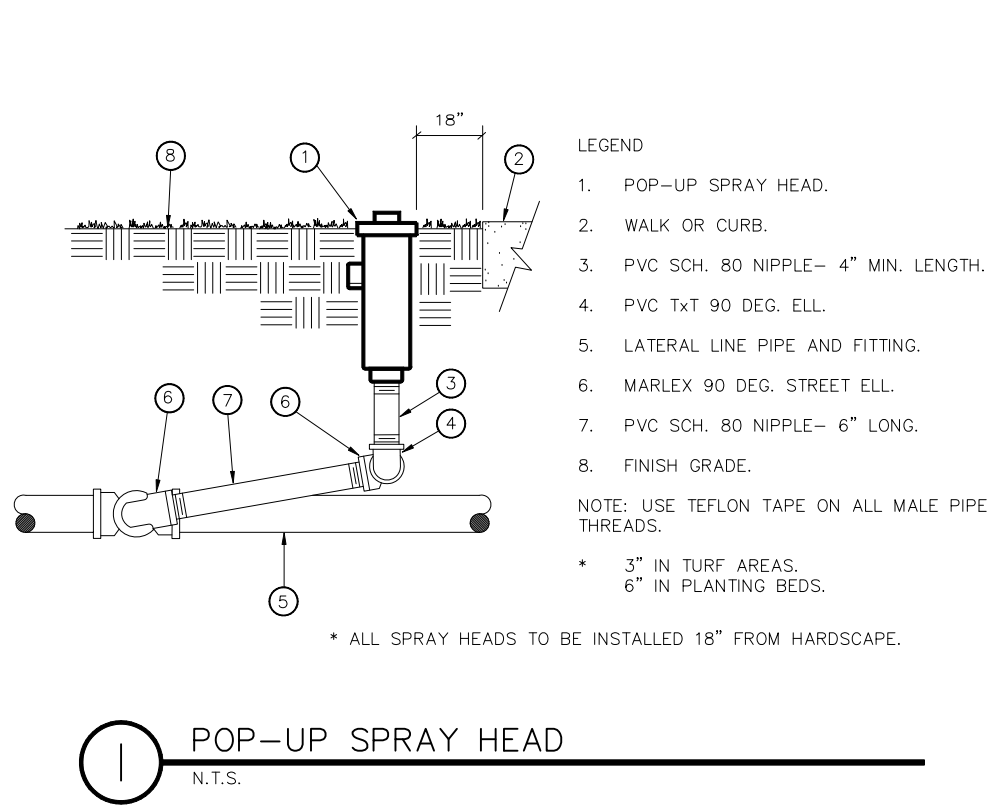
**H** QUICK COUPLING VALVE ASSEMBLY  
N.T.S.



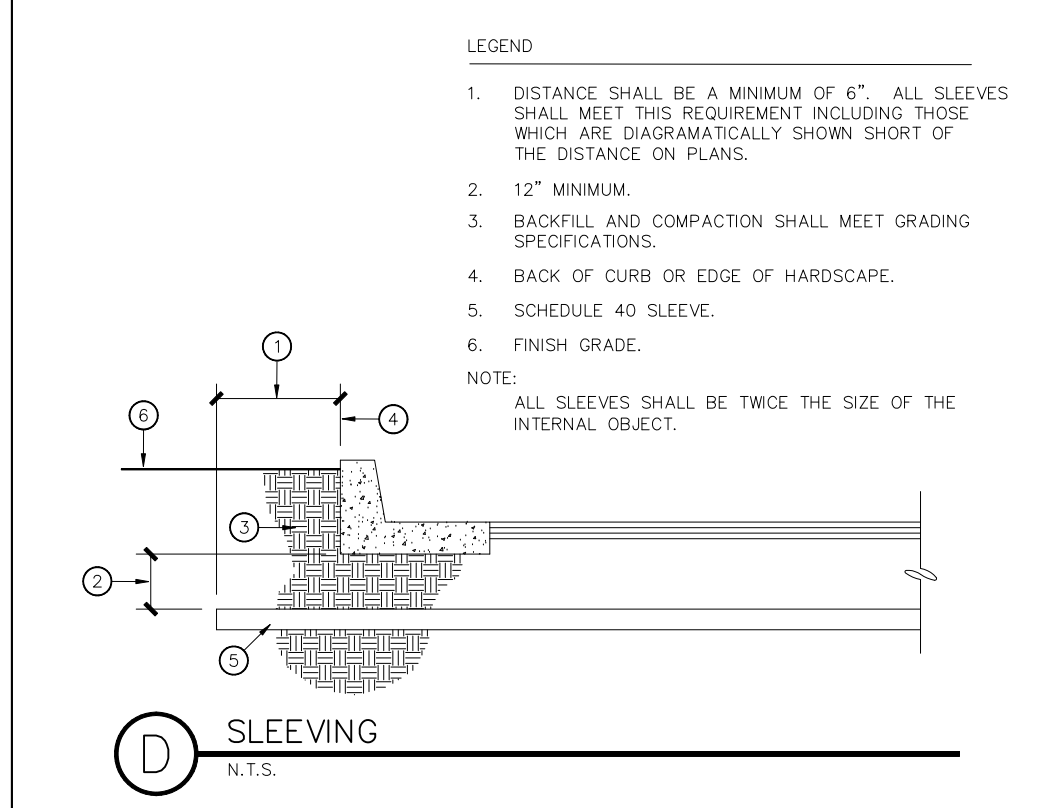
**C** GATE VALVE  
N.T.S.



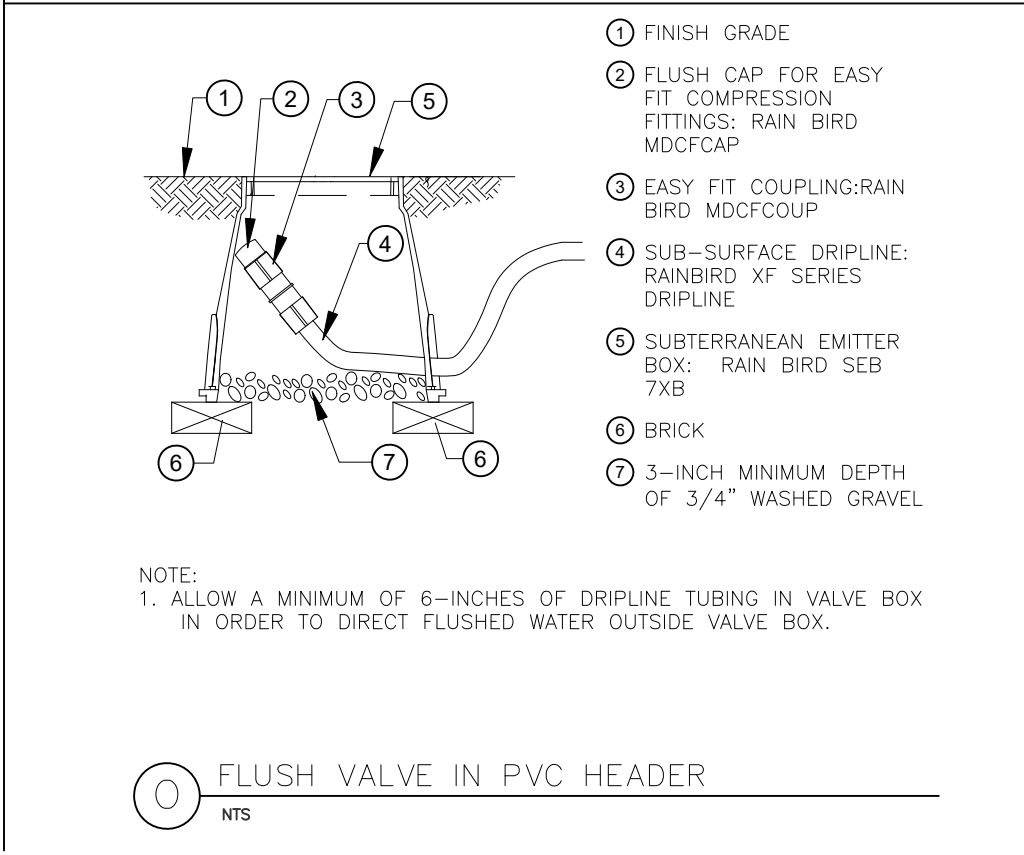
**N** AIR RELIEF VALVE IN PVC HEADER  
N.T.S.



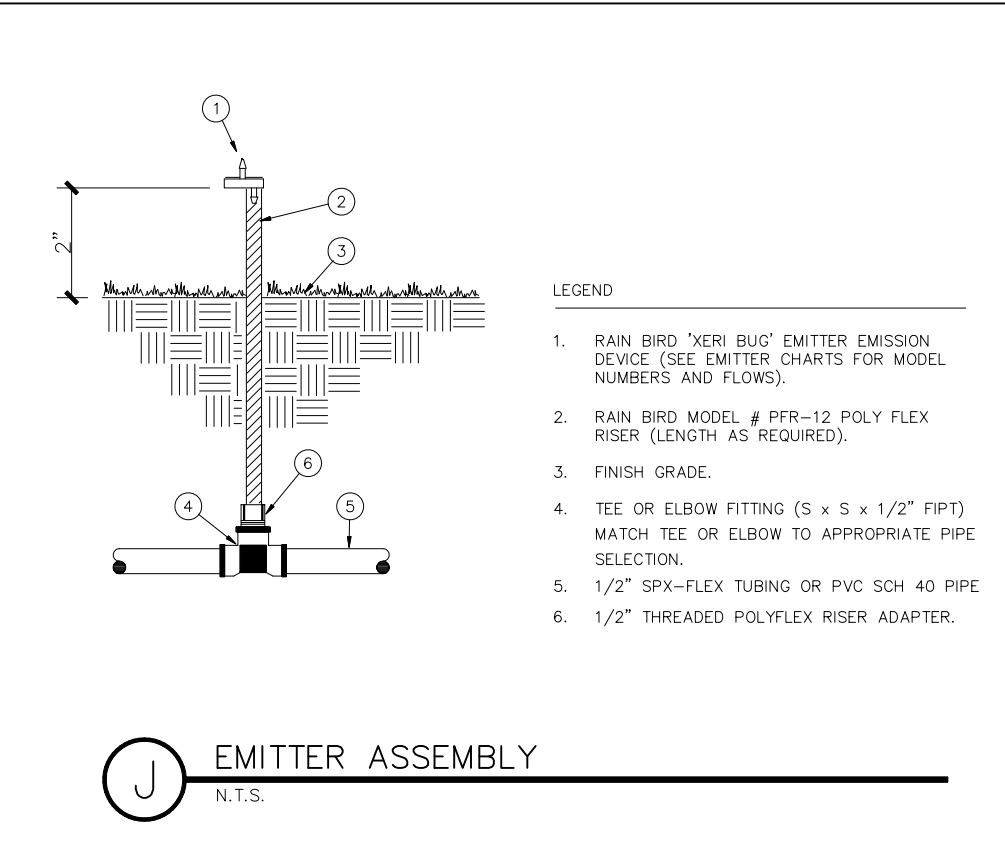
**I** POP-UP SPRAY HEAD  
N.T.S.



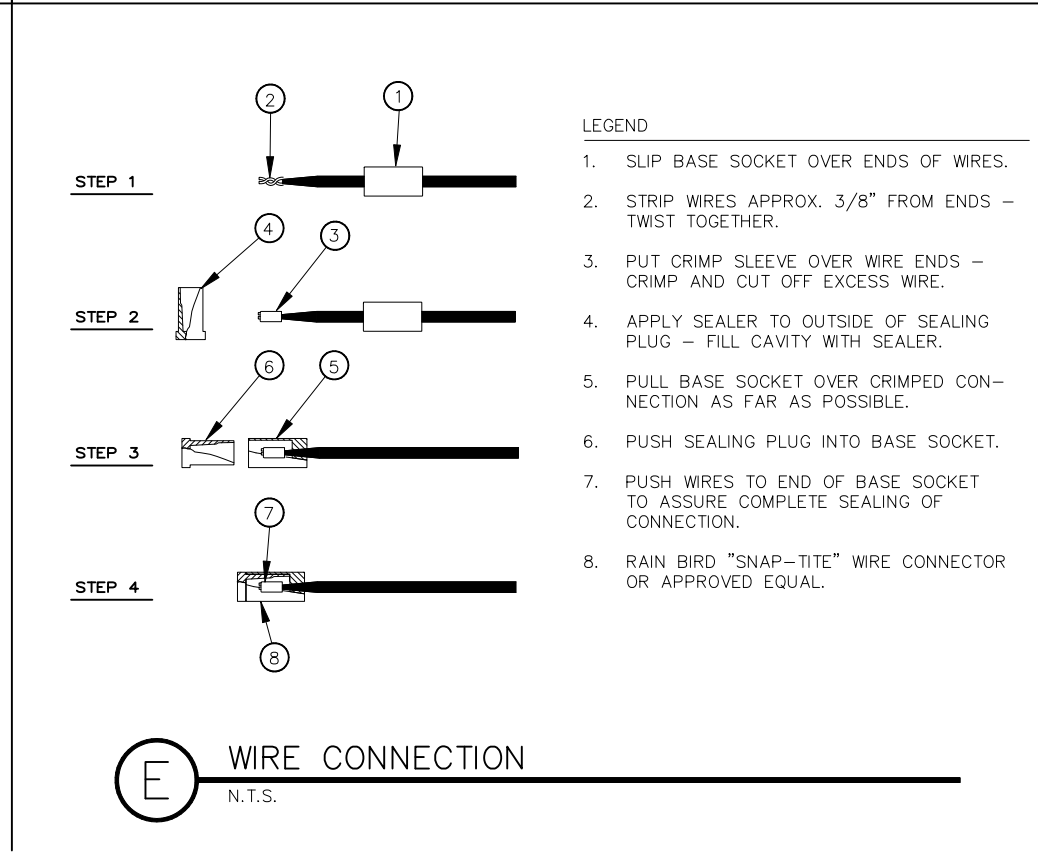
**D** SLEEVING  
N.T.S.



**O** FLUSH VALVE IN PVC HEADER  
N.T.S.



**J** EMITTER ASSEMBLY  
N.T.S.



**E** WIRE CONNECTION  
N.T.S.

<b>A</b>	CONTROLLER	INSTALL LEIT 4004 FOUR STN SOLAR CONTROLLER WITH STAINLESS STEEL ENCLOSURE
<b>B</b>	RAINBIRD	XCZ-100-B-COM ELECTRIC EMITTER CONTROL DRIP VALVE ASSEMBLY. PESP VALVE REFER TO DETAIL SHEET.

PIPE SLEEVING FOR CONTROLLER WIRES, PRESSURE AND NON-PRESSURE LATERALS TO OCCUR UNDER ALL MAJOR HARDSCAPE. SEE DETAIL IRRIGATION DETAIL SHEET.

NOTES:  
CONTRACTOR TO VERIFY EXISTING VALVES AT ENTRIES TO PROJECT AND ALONG PERIMETER TO DETERMINE WHICH VALVES ARE TO REMAIN FOR IRRIGATING LANDSCAPE THAT IS NOT INTENDED FOR RENOVATION.  
VALVES, LATERALS AND MAINLINES ARE SHOWN IN HARDSCAPE FOR CLARITY PURPOSES ONLY. VALVE WIRE TO BE INSTALLED IN PLANTER BEDS ONLY. NO PIPE TRENCHING SHALL OCCUR OUTSIDE OF LOT LINE OR PROPERTY BOUNDARIES.

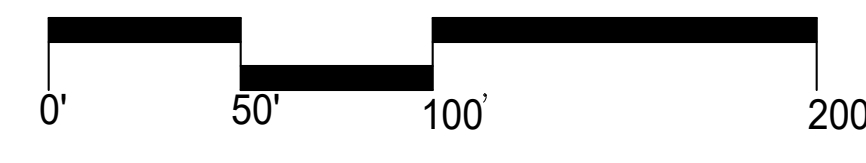
**GENERAL IRRIGATION NOTES**

- ALL SPRINKLER HEADS SHALL BE SET PERPENDICULAR TO FINISH GRADE OF THE AREA TO BE IRRIGATED UNLESS OTHERWISE DESIGNATED ON THE PLANS.
- THE SPRINKLER SYSTEM DESIGN IS BASED ON THE MINIMUM OPERATING PRESSURE AND THE MAXIMUM FLOW DEMAND SHOWN ON THE IRRIGATION DRAWINGS AT THE METER OR POINT OF CONNECTION. THE IRRIGATION CONTRACTOR SHALL VERIFY WATER PRESSURE PRIOR TO CONSTRUCTION. REPORT ANY DIFFERENCE BETWEEN THE WATER PRESSURE INDICATED ON THE DRAWINGS AND THE ACTUAL PRESSURE READING AT THE IRRIGATION POINT OF CONNECTION TO THE OWNER'S AUTHORIZED REPRESENTATIVE. IN THE EVENT PRESSURE DIFFERENCES ARE NOT REPORTED PRIOR TO START OF CONSTRUCTION, THE IRRIGATION CONTRACTOR SHALL ASSUME FULL RESPONSIBILITY FOR ANY REVISIONS NECESSARY.
- 120 VOLT ELECTRICAL POWER OUTLET AT THE AUTOMATIC CONTROLLER LOCATION SHALL BE PROVIDED BY OTHERS. IT SHALL BE THE RESPONSIBILITY OF THE IRRIGATION CONTRACTOR TO MAKE THE FINAL HOOK-UP FROM THE ELECTRICAL OUTLET TO THE AUTOMATIC CONTROLLER.
- THIS DESIGN IS DIAGRAMMATIC. ALL PIPING, VALVES, ETC. SHOWN WITHIN PAVED AREAS IS FOR DESIGN CLARIFICATION ONLY AND SHALL BE INSTALLED IN PLANTING AREAS. AVOID ANY CONFLICTS BETWEEN THE SPRINKLER SYSTEM, PLANTING AND ARCHITECTURAL FEATURES.
- THE IRRIGATION CONTRACTOR SHALL FLUSH AND ADJUST ALL SPRINKLER HEADS FOR OPTIMUM PERFORMANCE AND TO ALLOW FOR NO OVERSPRAY ONTO WALKS, ROADWAYS AND/OR BUILDINGS. THIS SHALL INCLUDE SELECTING THE BEST DEGREE OF ARC TO FIT THE EXISTING SITE CONDITIONS AND TO THROTTLE THE FLOW CONTROL AT EACH VALVE TO OBTAIN THE OPTIMUM OPERATING PRESSURE FOR EACH SYSTEM.
- DO NOT WILLFULLY INSTALL THE SPRINKLER SYSTEM AS SHOWN ON THE DRAWINGS WHEN IT IS OBVIOUS IN THE FIELD THAT OBSTRUCTIONS, GRADE DIFFERENCES OR DIFFERENCES IN THE AREA DIMENSIONS EXIST THAT MIGHT NOT HAVE BEEN CONSIDERED IN THE ENGINEERING. SUCH OBSTRUCTIONS OR DIFFERENCES SHOULD BE BROUGHT TO THE ATTENTION OF THE OWNER'S AUTHORIZED REPRESENTATIVE. IN THE EVENT THIS NOTIFICATION IS NOT PERFORMED, THE IRRIGATION CONTRACTOR SHALL ASSUME FULL RESPONSIBILITY FOR ANY REVISIONS NECESSARY.
- INSTALL ALL PIPE MATERIALS AND EQUIPMENT AS SHOWN IN DETAILS. USE TEFLON TAPE OR TEFLON PIPE DOPE ON ALL PVC MALE PIPE THREADS ON ALL SPRINKLER SWING JOINT AND VALVE ASSEMBLIES.
- IT IS THE RESPONSIBILITY OF THE IRRIGATION CONTRACTOR TO FAMILIARIZE HIMSELF WITH ALL GRADE DIFFERENCES, LOCATION OF WALLS, RETAINING WALLS, ETC. HE SHALL COORDINATE HIS WORK WITH THE GENERAL CONTRACTOR AND OTHER SUB-CONTRACTORS FOR THE LOCATION AND INSTALLATION OF PIPE SLEEVES THROUGH WALLS, UNDER ROADWAYS, PAVING, STRUCTURES, ETC.
- IN ADDITION TO THE CONTROL WIRE SLEEVES SHOWN ON THE DRAWINGS, THE IRRIGATION CONTRACTOR SHALL BE RESPONSIBLE FOR THE INSTALLATION OF CONTROL WIRE SLEEVES OF SUFFICIENT SIZE UNDER ALL OTHER PAVED AREAS.

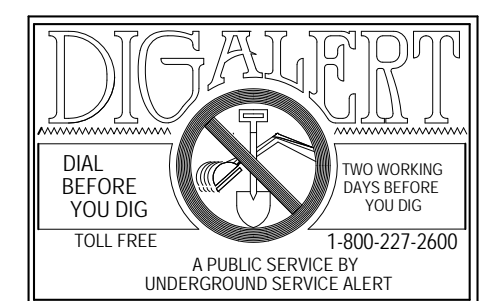
CITY OF COACHELLA

APPROVED FOR CONSTRUCTION:

MARITZA MARTINEZ  
PUBLIC WORKS DIRECTOR



GRAPHIC SCALE  
SCALE: 1" = 50'



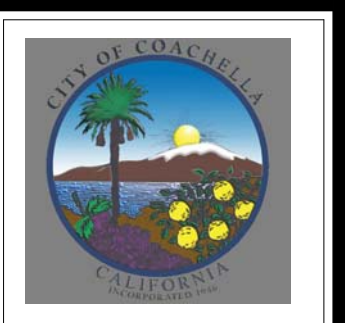
Coachella Retention Basins  
IRRIGATION DETAILS

North

Job No.  
PL-DR

Sheet No.

of 8 L2.1



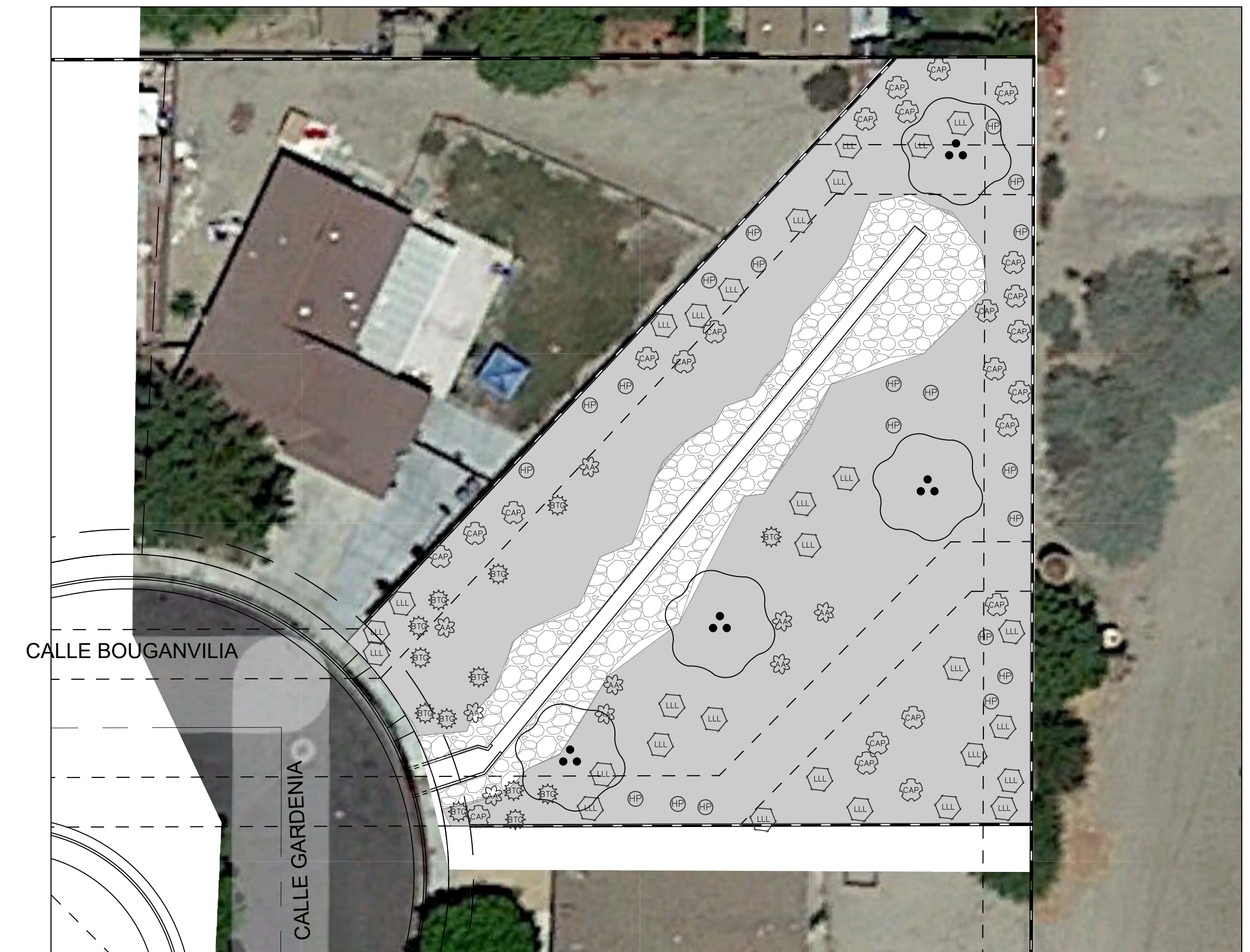
City of Coachella  
53990 Enterprise Way  
Coachella, CA 92236

no.	revisions	date	by

Scale: 1" = 50'  
Date: May 2, 2023  
Drawn By:  
Approved By:



**LAS LUNAS RETENTION BASIN**



**BOUGANVILLEA RETENTION BASIN**

**PLANT PALETTE**

TREES	CODE	BOTANICAL / COMMON NAME	CONT	WUCOLS	QTY
	ACA	Acacia aneura / Mulga	15 Gal	LOW (3)	5
SHRUBS	CODE	BOTANICAL / COMMON NAME	CONT	WUCOLS	QTY
	HP	Hesperaloe 'Brake Lights'	5 gal	MED (5)	51
	LLL	Leucophyllum langmaniae 'Lynn's Legacy' / Barometerbush	5 gal*	LOW (2)	19
ACCENTS	CODE	BOTANICAL / COMMON NAME	CONT	WUCOLS	QTY
	AA	Agave americana / Century Plant	5 gal*	V. LOW (1)	53
	BTG	Bougainvillea 'Torch Glow'	5 gal	MED (5)	15
	CAP	Caesalpinia pulcherrima / Red Bird Of Paradise	5 gal	MED (5)	19

- California Gold 3/4" Crush - 12,300 sf  
Installed to a compacted depth of 2".
- Apache Brown 3/4" Crush - 9,100 sf  
Installed to a compacted depth of 2".
- Vista Gold 3" - 6" - 1,100 sf  
Installed to a depth of 8".

**NOTE:  
RETENTION BASIN SOLAR LIGHTS**

SOLAR LIGHTS FOR THE RETENTION BASINS SHALL BE EE800W-SHRC ADVANCE SOLAR HYBRID MICROGRID LED STREET LIGHT SERIES BY eLEDing. CONTACT eLEDing at 877.579.3889 OR AT SALES@EESGI.COM

LAS LUNAS BASIN TO RECEIVE 3 LIGHTS, BOUGANVILLEA BASIN TO RECEIVE 2 LIGHTS.

LOCATIONS TO BE DETERMINED IN FIELD BY CITY STAFF.

**PLANT PALETTE**

TREES	CODE	BOTANICAL / COMMON NAME	CONT	WUCOLS	QTY
	ACA	Acacia aneura / Mulga	15 Gal	LOW (3)	4
SHRUBS	CODE	BOTANICAL / COMMON NAME	CONT	WUCOLS	QTY
	HP	Hesperaloe 'Brake Lights'	5 gal	MED (5)	17
	LLL	Leucophyllum langmaniae 'Lynn's Legacy' / Barometerbush	5 gal*	LOW (2)	29
ACCENTS	CODE	BOTANICAL / COMMON NAME	CONT	WUCOLS	QTY
	AA	Agave americana / Century Plant	5 gal*	V. LOW (1)	9
	BTG	Bougainvillea 'Torch Glow'	5 gal	MED (5)	13
	CAP	Caesalpinia pulcherrima / Red Bird Of Paradise	5 gal	MED (5)	24

California Gold 3/4" Crush - 11,500 sf  
Installed to a compacted depth of 2".

Vista Gold 3" - 6" Cobble - 2,300 sf  
Installed to a depth of 8"

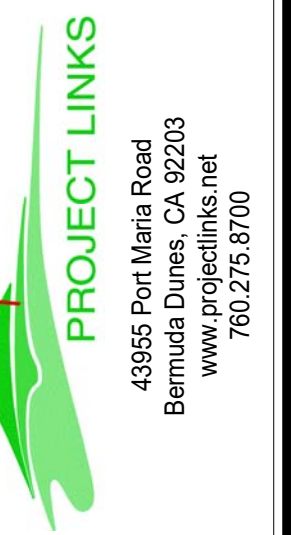
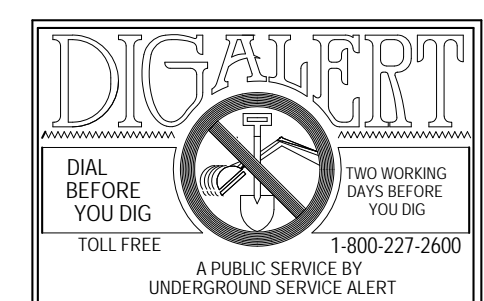
**CITY OF COACHELLA**

APPROVED FOR CONSTRUCTION:

MARITZA MARTINEZ  
PUBLIC WORKS DIRECTOR



**GRAPHIC SCALE**  
SCALE: 1" = 50'



**City of Coachella**  
53990 Enterprise Way  
Coachella, CA 92236

no.	revisions	date	by

Scale: 1" = 50'  
Date: May 2, 2023  
Drawn By:  
Approved By:

**Coachella Retention Basins**

Las Lunas - Bouganvillea Planting Plans



Job No.

**PL-DR**

Sheet No.

L3.1

of 8

PLANTING NOTES & APPROVAL PROCEDURES

LANDSCAPE ARCHITECT WILL WORK WITH LANDSCAPE CONTRACTOR TO ESTABLISH DESIRED PLANTING CHARACTER OF EACH OF THE DIFFERENT LANDSCAPE TREATMENTS WHEN FIRST LAYED OUT. CONTINUED PLANTING WILL BE LAYED OUT BY LANDSCAPE CONTRACTOR AND APPROVAL OBTAINED BY PERIODIC SITE VISITS BY LANDSCAPE ARCHITECT.

LANDSCAPE CONTRACTOR SHALL BE WILLING TO WORK WITH THE LANDSCAPE ARCHITECT IF CHANGES TO THE PLANT PALETTE ARE NECESSARY TO ACHIEVE

GENERAL NOTES

THE LANDSCAPE CONTRACTOR IS TO PROVIDE A LIST OF SUPPLIERS FOR PLANT MATERIAL. ALL TREES AND PLANT MATERIALS TO BE APPROVED BY LANDSCAPE ARCHITECT AT TIME OF DELIVERY TO THE JOB SITE. THE CONTRACTOR IS TO NOTIFY THE LANDSCAPE ARCHITECT 48 HOURS PRIOR TO SHIPMENT ARRIVAL TO SCHEDULE THE MATERIAL REVIEW.

ALL TREE LOCATIONS ARE TO BE STAKED IN THE FIELD BY LANDSCAPE ARCHITECT. LANDSCAPE CONTRACTOR IS TO NOTIFY LANDSCAPE ARCHITECT A MINIMUM OF 48 HOURS PRIOR TO STAKING. THE LANDSCAPE CONTRACTOR IS RESPONSIBLE FOR MAINTAINING THE STAKES UNTIL ALL TREES ARE PLANTED AND VERIFIED BY LANDSCAPE ARCHITECT

ALL TREES AND PLANT MATERIAL ARE TO CONFORM TO THE DETAILS AND SPECIFICATIONS OUTLINED IN THE PLANTING DETAILS AND PLANTING SPECIFICATIONS OF THE CONSTRUCTION PACKAGE.

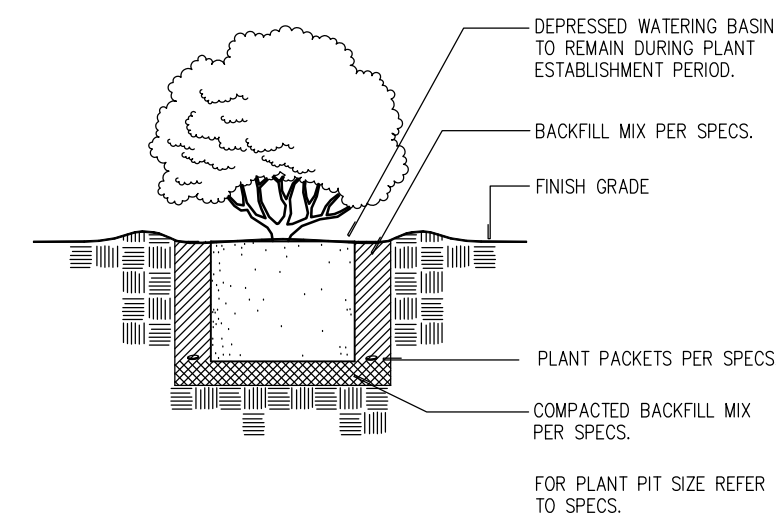
ALL TREES ARE TO BE SELECTED BY LANDSCAPE ARCHITECT. CALL TO OBTAIN A COPY OF THE TREE TAG LIST.

ANY PLANT MATERIAL THAT IS REJECTED SHALL BE REPLACED IMMEDIATELY AND THE REJECTED MATERIAL IS TO BE REMOVED FROM THE JOBSITE.

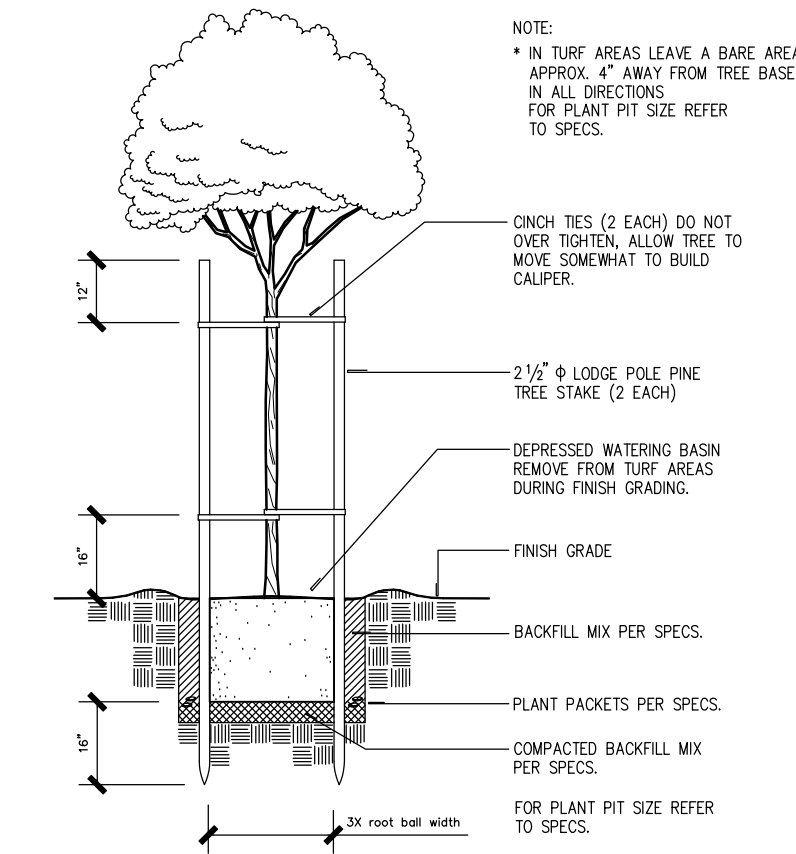
THE LANDSCAPE CONTRACTOR IS TO VERIFY SHRUB MATERIAL AND INERT MATERIAL QUANTITIES FOR EACH GOLF HOLE WITH THE LANDSCAPE ARCHITECT PRIOR TO PLACING DELIVERY ORDERS. THE ACTUAL QUANTITIES WILL BE BASED ON PLANTING AREAS STAKED IN THE FIELD.

LANDSCAPE CONTRACTOR SHALL BE RESPONSIBLE FOR KEEPING RECORDS OF QUANTITIES OF PLANT MATERIAL USED ON A HOLE BY HOLE BASIS. QUANTITY LISTS SHALL BE DISTRIBUTED TO LANDSCAPE ARCHITECT AS EACH HOLE IS COMPLETED.

SOIL STABILIZATION MAY BE REQUIRED IN VARIOUS LOCATIONS WITHIN THE WORK DISTURBANCE AREA. THE CONTRACTOR SHALL MAKE THE LANDSCAPE ARCHITECT AWARE OF SUCH CONDITIONS, AND A DECISION REGARDING USE OF STABILIZER SHALL BE MADE. SHOULD STABILIZATION BE REQUIRED, THE CONTRACTOR SHALL USE SOILTAC SOIL STABILIZER MANUFACTURED BY SOILWORKS, SCOTTSDALE, AZ.

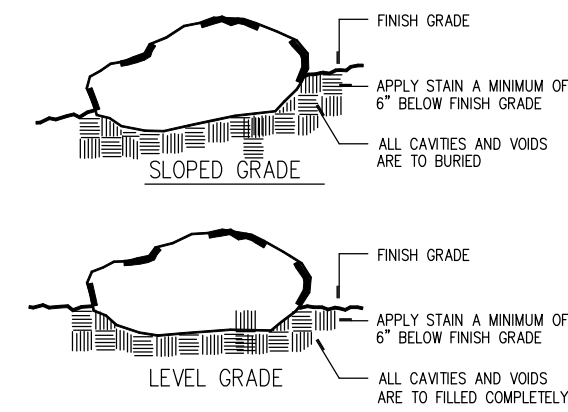


**E** SHRUB PLANTING  
N.T.S.

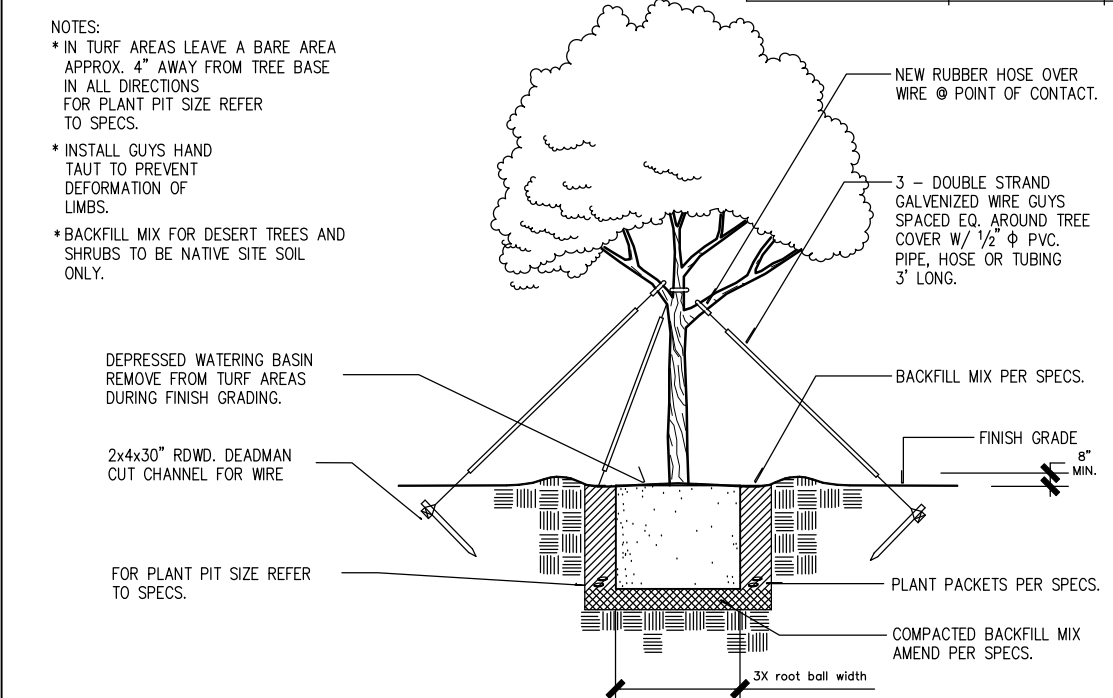
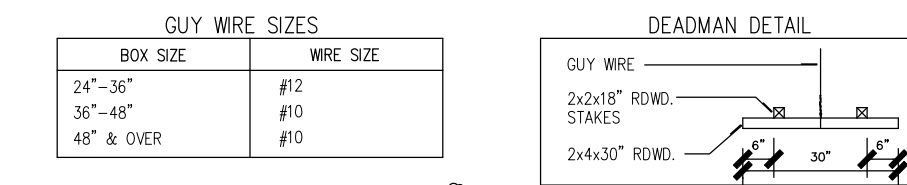


**A** TREE PLANTING WITH DOUBLE STAKING  
N.T.S.

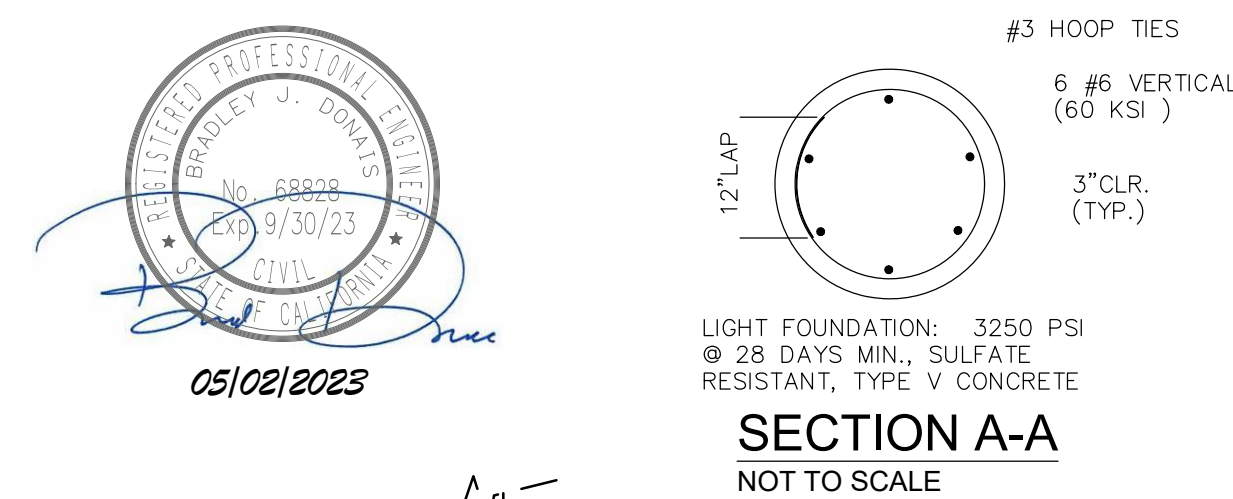
- Boulders are specified in tons, with a cubic yard being equal to 1.7 tons
- Installer is to be responsible to prevent any severe chipping or damage to boulders during the placement process.
- Boulders are to be placed using cables from a Ladder Boom or a Boulder Placement Boom.
- Installer is to pay particular attention to how boulder is lifted to allow boulder to be spun in order to set boulder in its most desirable position.
- Boulder is to ultimately be set to a minimum of 1/2 buried (See Detail).
- All cavities and voids near the bottom of the boulder are to be set below finish grade.
- After setting, soil is to be cleared from boulder to a depth of 6" to allow for staking of boulder before finish grade.
- Boulder is to be washed clean of dirt, debris, and small chips and allowed to dry prior to staking.
- Stain is to be a high quality agent approved by the Landscape Architect and tested on the same type of rock to achieve a standard medium stain.
- Spraying of mixture is to be smooth and uniform on all boulders to achieve consistency throughout project.



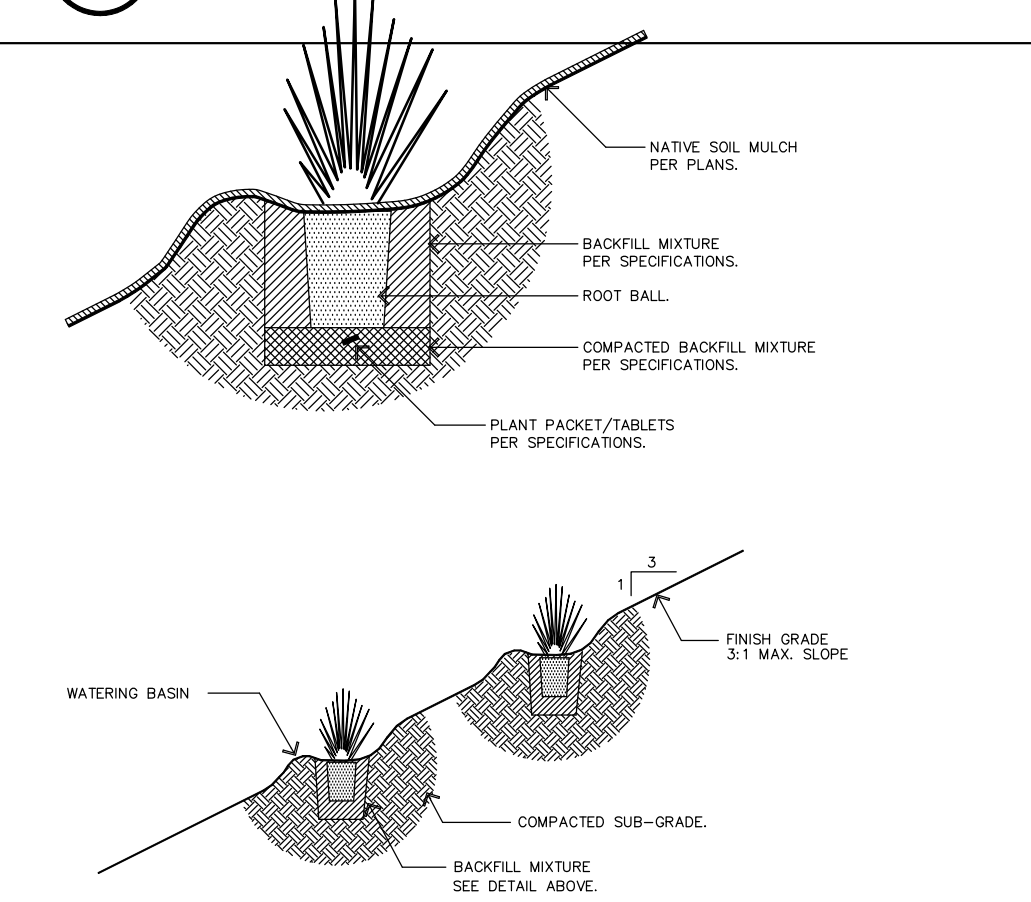
**F** BOULDER PLACEMENT  
N.T.S.



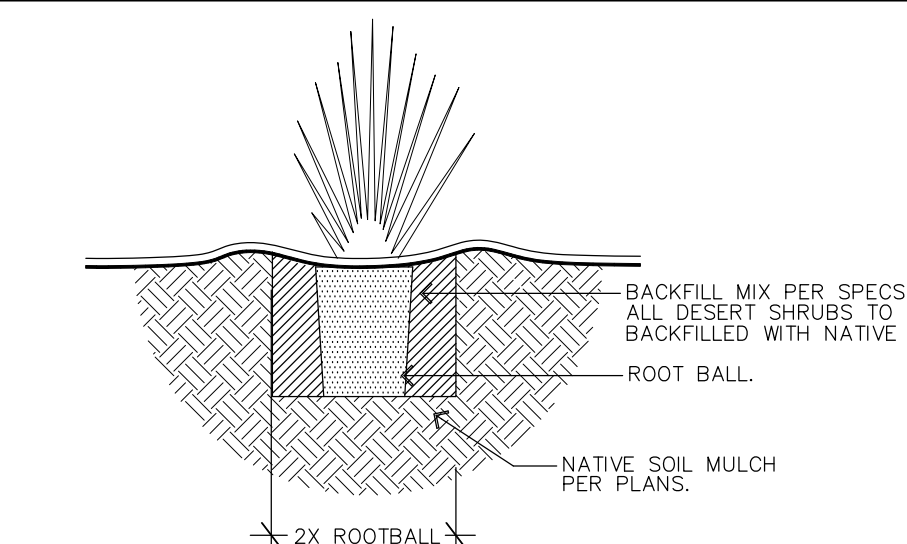
**B** TREE PLANTING WITH GUYING  
N.T.S.



**G** SOLAR LIGHT FOUNDATION  
N.T.S.



**C** SHRUB PLANTING ON SLOPE  
N.T.S.



**D** AGAVE PLANTING  
N.T.S.

Solar Powered HRF-Sensor, RF-Control Ultra Brightness LED Area Light **EE880W-SHRC100** 100W/16000Lm



Technical Specifications	
CREE LED	(8000-6500K) 100W 150LMW > 50000H
LED Quantity	10 COB
Battery Type	586WH, Li-ion, 5000 hrs. Normal Operating Cycles
Solar Panel	80W Monocrystalline Silicon Laminated Plate. Built with Tempered Glass 25+ Years Lifespan
Charging Method	Solar Power-18Vmp) ALX DC Input. 15-18VDC/5A
Solar Charging Time	6-8 hrs with Direct Sunlight
Lighting Time	3-5 Nights After Full Charge
Sensor	HRF Sensor + Photocell Sensor
Lighting Mode	32 Lighting Mode with Remote Control (MCD1+MCD2)
Housing Material	Aluminum Alloy Housing, Lifespan: 25+ years
Product Size & Weight	80" x 13" x 2"   53 lbs
IP Level	65 (Water Resistant and Dust Tight)
Working Temperature	-13°F ~ 149°F (-25°C ~ 65°C)
Warranty	2 Years Full Warranty
Patented and Pending	US 8194061B2, & International
Certification	CE, RoHS, FCC, ISO9001:2015
Pole Diameter	3-3/8"
Installation Height	20 - 35 Feet
Suggested Spacing Distance	70 - 92 Feet Apart
Package Size & Weight	84" x 16" x 8"   56 lbs

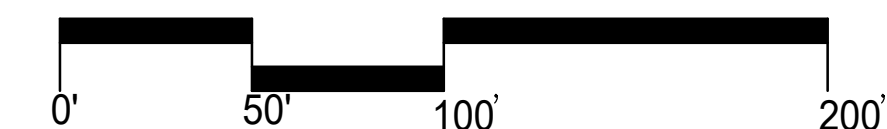
www.leding.com info@emol.com Tel: 1-877-478-3889 Mon-Fri, 10am-5pm PST

**H** SOLAR LIGHT  
N.T.S.

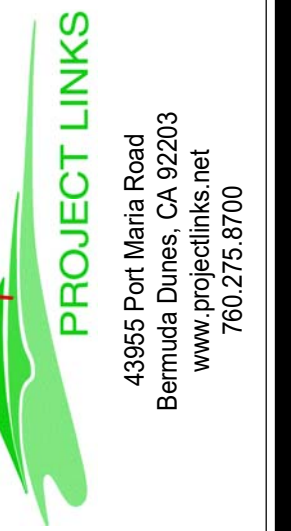
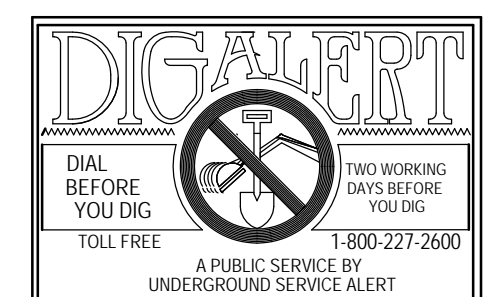
CITY OF COACHELLA

APPROVED FOR CONSTRUCTION:

MARITZA MARTINEZ  
PUBLIC WORKS DIRECTOR



GRAPHIC SCALE  
SCALE: 1" = 50'



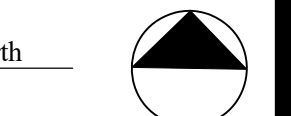
City of Coachella  
53990 Enterprise Way  
Coachella, CA 92236

no.	revisions	date	by

Scale: 1" = 50'  
Date: May 2, 2023  
Drawn By:  
Approved By:

Coachella Retention Basins

PLANTING DETAILS



Job No.

PL-DR

Sheet No.

L-4.1

of 8