

BID FORM
UPDATED 06/16/2023

NAME OF BIDDER: _____

The undersigned, hereby declare that we have carefully examined the location of the proposed Work, and have read and examined the Contract Documents, including all plans, specifications, and all addenda, if any, for the following Project:

**LAS LUNAS & CALLE BOUGANVILIA RETENTION
BASIN LANDSCAPE IMPROVEMENTS
CITY PROJECT NO. LL-01 & LL-05**

Unit prices in each and every case represent the true unit price used in preparing the bid schedule totals (Bid Form). Unit prices listed herein include material, installation and appurtenant work as is necessary to have the item complete in place, and operational, meeting the full intent of the plans and specifications. Items marked with an (F) shall be considered a "Final Pay Quantity" Item and paid to the maximum quantity as listed.

It is understood that the basis of award shall be the lowest total price of the sum of the Base Bid.

We hereby propose to furnish all labor, materials, equipment, tools, transportation, and services, and to discharge all duties and obligations necessary and required to perform and complete the Project for the following TOTAL BID PRICE:

BASE BID					
Item No.	Item Description	Est. Qty.	Unit	Unit Price (in figures) Dollars	Item Total (in figures) Dollars
1	Mobilization	1	LS	\$	\$
2	Dust Control/Stormwater Best Management Practices (BMP's)	1	LS	\$	\$
3	Traffic Control/Site Protection	1	LS	\$	\$
4	Irrigation (Las Lunas Basin)	1	LS	\$	\$
5	Irrigation (Calle Bouganvilia Basin)	1	LS	\$	\$
6	15 Gallon Tree	9	EA	\$	\$
7	5 Gallon Shrub/Plant	182	EA	\$	\$

BASE BID					
Item No.	Item Description	Est. Qty.	Unit	Unit Price (in figures) Dollars	Item Total (in figures) Dollars
8	Crushed 3/4" Stone Ground Cover (California Gold)	23,800	SF	\$	\$
9	Crushed 3/4" Stone Ground Cover (Apache Brown)	9,100	SF	\$	\$
10	Rubble (3" - 6" Cobble) (Vista Gold fractured Rock)	3,400	SF	\$	\$
11	90-Day Maintenance Period	1	LS	\$	\$
12	Solar Light w/ Foundation	5	EA	\$	\$
Total Amount – Base Bid					\$

Grand Total of Base Bid:

(Words)

\$ _____

(Figure)

The costs for any Work shown or required in the Contract Documents, but not specifically identified as a line item are to be included in the related line items and no additional compensation shall be due to Contractor for the performance of the Work.

All blank spaces appearing above must be filled in. Failure to fill in any blank spaces may render the bid non-responsive. In the event of discrepancy between the Unit Price and Item Cost set forth for a unit basis item, the Unit Price shall prevail and be utilized as the basis for determining the lowest responsive, responsible Bidder. However, if the amount set forth as a Unit Price is ambiguous, unintelligible or uncertain for any cause, or is omitted, or is the same amount as the entry in the Item Cost column, then the amount set forth in the Item Cost column for the item shall prevail and shall be divided by the estimated quantity for the item and the price thus obtained shall be the Unit Price.

For purposes of evaluating Bids, the City will correct any apparent errors in the extension of unit prices and any apparent errors in the addition of lump sum and extended prices.

The estimated quantities for Unit Price items are approximate and for purposes of comparing Bids only, and the City makes no representation that the actual quantities of work performed will not vary from the estimates. Final payment shall be determined by the Engineer from measured quantities of work performed based upon the Unit Price. A Contract Quantity Adjustment Change

Order will be issued upon the completion of the project to adjust the Contract Quantities and Amounts accordingly.

The undersigned agrees that this Bid Schedule constitutes a firm offer to the City which cannot be withdrawn for the number of calendar days indicated in the Notice Inviting Bids from and after the Bid opening, or until a Contract for the Work is fully executed by the City and a third party, whichever is earlier.

If the Contract Documents specify Alternate Bid items, the City can choose to include any, all, or none of the Alternate Bid items of Work into the executed Contract. If the City selects any of the Alternate Bid items, the corresponding Alternate Bid prices shall be added to or deducted from Base Bid Price for the Work. The City can award/select Alternate Bid items at any time(s).

Name of Bidder _____

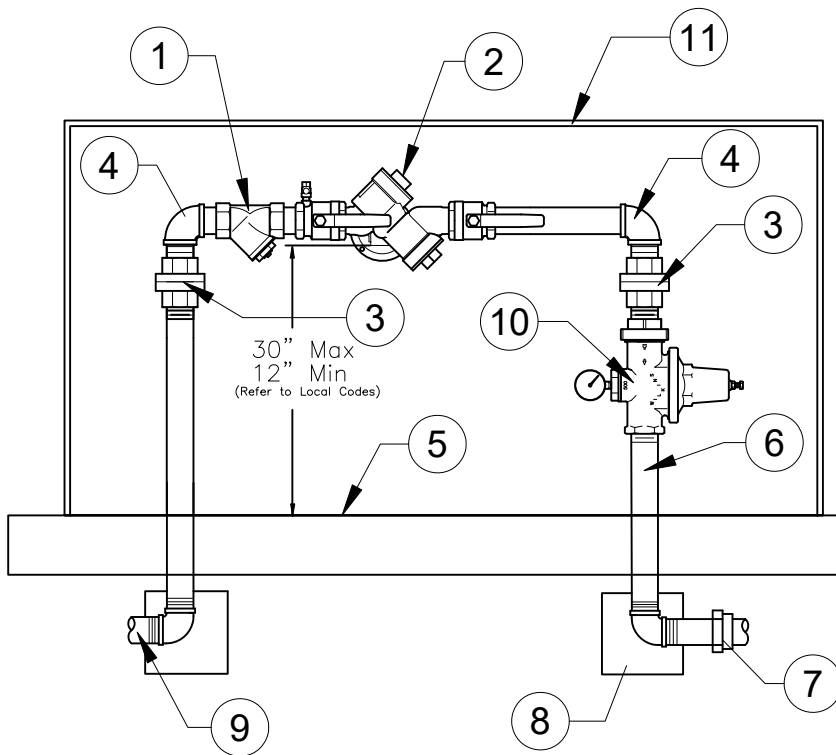
Signature _____

Name and Title _____

Dated _____

ENCLOSURE NOTE:

BACKFLOW ENCLOSURE TO BE LOCKABLE BPGI GUARD SHACK OR APPROVED EQUAL. EXPANDED METAL ENCLOSURE (SIZE AS REQUIRED)
POWDER COAT PAINT - FOREST GREEN



- 1 LINE SIZED WYE STRAINER
- 2 FEBCO MODEL 825 Y REDUCED PRESSURE BACKFLOW DEVICE W/2 BALL VALVES,
- 3 BRASS UNION
- 4 BRASS ELL (TYP.)
- 5 FINISH GRADE
- 6 BRASS NIPPLE (TYP.)
- 7 PVC MALE ADAPTER
- 8 1 CU. FT. CONCRETE THRUST BLOCKS (TYP.). WRAP PIPES W/ 10 MIL. TAPE. SATURATE AND COMPACT SUB-GRADE TO 90% PRIOR TO POUR.
- 9 FROM P.O.C. ADAPT AS REQUIRED
- 10 WILKINS 500 PRESSURE REGULATOR WITH OPTIONAL PRESSURE GAUGE
- 11 SECURED ENCLOSURE SEE NOTE ABOVE

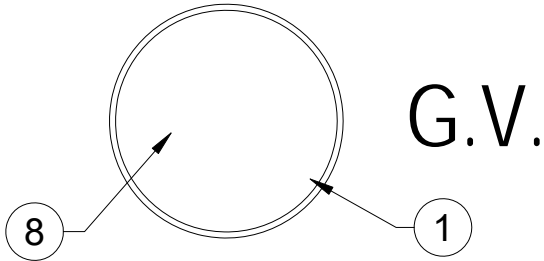


ENCLOSED BACKFLOW / PRESSURE REGULATOR

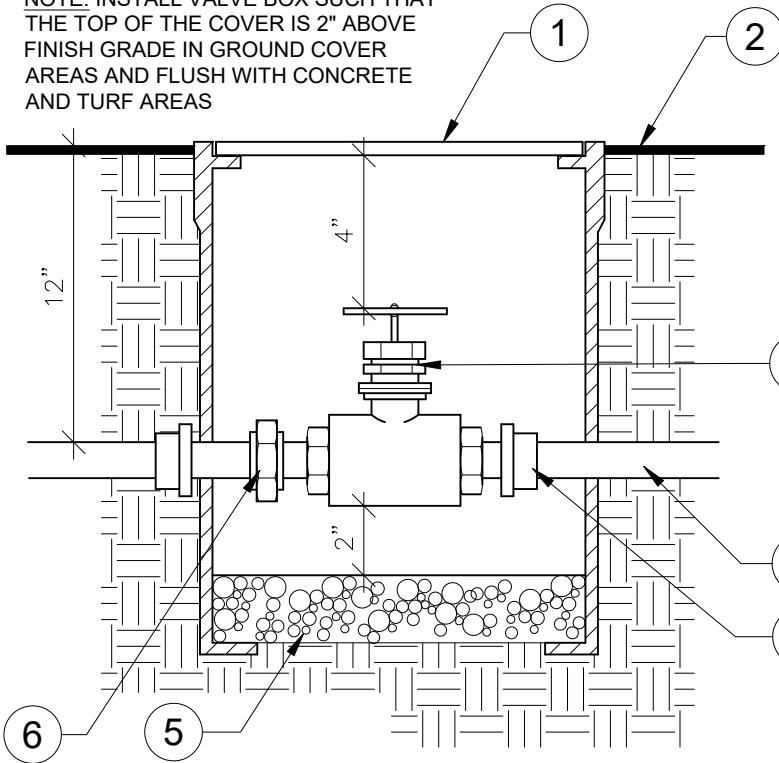
NTS

328409.46-05

VALVE BOX LID (TOP VIEW)



NOTE: INSTALL VALVE BOX SUCH THAT THE TOP OF THE COVER IS 2" ABOVE FINISH GRADE IN GROUND COVER AREAS AND FLUSH WITH CONCRETE AND TURF AREAS

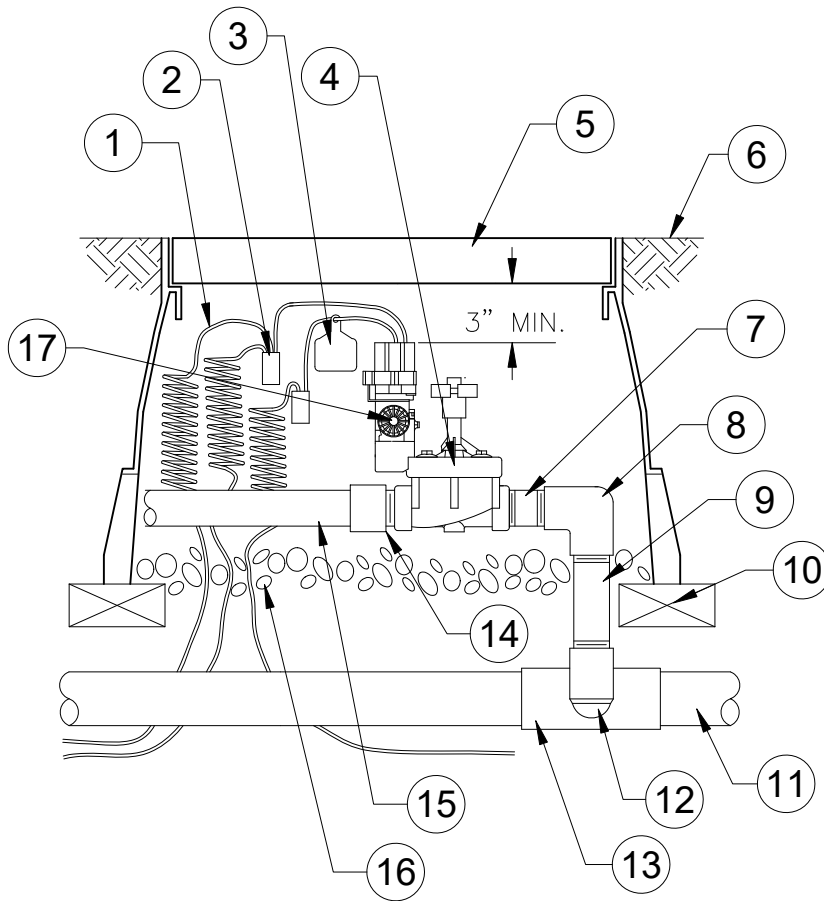


- ① CARSON ROUND VALVE BOX (SEE IRRIGATION EQUIPMENT SCHEDULE) INSTALL FLUSH W/ FINISH GRADE
- ② FINISH GRADE
- ③ GATE VALVE (SEE IRRIGATION LEGEND AND IRRIGATION EQUIPMENT SCHEDULE)
- ④ PRESSURIZED PVC MAINLINE
- ⑤ 1 CU CRUSHED GRAVEL
- ⑥ BRASS UNION
- ⑦ SCH 80 PVC NIPPLE
- ⑧ HEAT BRAND "G.V." IN 2" TALL CHARACTERS ON TOP CENTER OF VALVE BOX LID

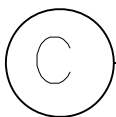
B ISOLATION SHUT OFF VALVE

Not to Scale

328406.33-07



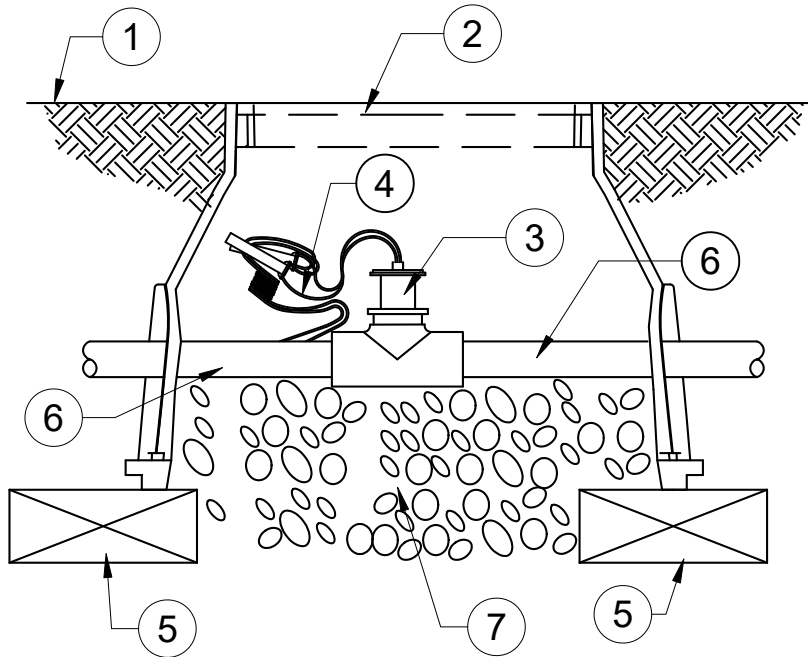
- 1 30-INCH LINEAR LENGTH OF WIRE, COILED
- 2 WATERPROOF CONNECTION RAIN BIRD SPLICE-1 (1 OF 2)
- 3 ID TAG: RAIN BIRD VID SERIES
- 4 REMOTE CONTROL VALVE: RAIN BIRD PEB
- 5 VALVE BOX WITH COVER: RAIN BIRD VB-STD
- 6 FINISH GRADE/TOP OF MULCH
- 7 PVC SCH 80 NIPPLE (CLOSE)
- 8 PVC SCH 40 ELL
- 9 PVC SCH 80 NIPPLE (LENGTH AS REQUIRED)
- 10 BRICK (1 OF 4)
- 11 PVC MAINLINE PIPE
- 12 SCH 80 NIPPLE (2-INCH LENGTH, HIDDEN) AND SCH 40 ELL
- 13 PVC SCH 40 TEE OR ELL
- 14 PVC SCH 40 MALE ADAPTER
- 15 PVC LATERAL PIPE
- 16 3.0-INCH MINIMUM DEPTH OF 3/4-INCH WASHED GRAVEL
- 17 PRS-DIAL PRESSURE REGULATING MODULE



RAIN BIRD MASTER VALVE WITH PRS-DIAL

1" = 1'-0"

328406.23-05



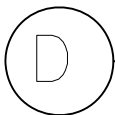
- ① FINISH GRADE
- ② CARSON VALVE BOX WITH LOCKING LID
- ③ FLOW SENSOR (SEE IRRIGATION LEGEND FOR MANUFACTURER, MODEL AND SIZE)
- ④ IRRIGATION CONTROL WIRES WITH MINIMUM 12" COIL OF WIRE
- ⑤ (4) BRICKS
- ⑥ MAINLINE PIPE FROM MASTER VALVE
- ⑦ 3" MINIMUM DEPTH OF 3/4" WASHED GRAVEL

NOTES:

1- FLOW SENSOR WIRE SHALL BE PER THE CONTROLLER MANUFACTURER'S SPECIFICATIONS.

2- INSTALL FLOW SENSOR PER MANUFACTURER'S SPECIFICATIONS AND RECOMMENDATIONS.

3- ALL WIRE RUNS SHALL BE CONTINUOUS WITHOUT ANY SPLICES. WIRE CONNECTIONS SHALL BE MADE USING DBR/Y-6 CONNECTORS OR APPROVED EQUAL.



FLOW SENSOR

NTS

328409.63-03